

**ADDENDUM NO. ONE (1)
CITY OF JEFFERSON, GEORGIA
WEST SIDE LIFT STATION REPLACEMENT
ISSUED MARCH 22, 2023**

RE: WEST SIDE LIFT STATION REPLACEMENT

EMI PROJECT No. 12-033

FROM: ENGINEERING MANAGEMENT, INC.
303 SWANSON DRIVE
LAWRENCEVILLE, GA 30043
Daniel Patterson, P.E.
770-962-1387

TO: PROSPECTIVE BIDDERS

This Addendum forms a part of the Contract Documents and Drawings, and modifies the original bidding documents dated February 2023.

The following items of the Contract Documents and Plans are modified as part of this Addendum:

Specifications

➤ *Section 00300, Bid Form*

The Bid Form has been revised to add inline sewage grinder, controls and associated appurtenances to Bid Item No 02601.03 Standard 5'0" Grinder Manhole and changed to a lump sum bid item. A revised Section 00300 is attached (revisions are shown in bold and italics).

➤ *Section 01025, Measurement & Payment*

The Measurement & payment section has been revised to remove Grinder Manholes from Part 3.10 – Standard Manholes and add an individual pay item Part 3.25 – Grinder Manhole – Complete (Section 02601) to clarify confusion of how and where the inline grinder and grinder manhole shall be bid. Also, Part 3.24 – Submersible Sewage Lift Station – Complete has been revised to remove wetwell coating, wetwell coating shall be paid for through Part 3.14 Manhole/Wetwell Coatings (Section 02603A). A revised Section 01025 is attached (revisions are shown in bold and italics).

Plans

➤ *Sheet PS2, Released for Bid Plans*

The jib crane detail on the above listed sheet was modified from hoist model “cm lodestar electric chain hoist 460 vac, manual trolley mount, model 3316T983 with 40' lift” to hoist model “cm lodestar electric chain hoist 460 vac, motorized trolley mount, model 3316T987 with 30' lift”

END OF ADDENDUM NO. 1

BID FORM

**WEST SIDE LIFT STATION REPLACEMENT
for the
City of Jefferson**

THIS BID IS SUBMITTED TO:

City of Jefferson
147 Athens Street
Jefferson, Georgia 30549
706-367-5121

(Hereinafter called "Owner")

THIS BID IS SUBMITTED BY:

(Name)
(Address)

(Telephone)

(Hereinafter called "Bidder")

BIDDER, in compliance with the Advertisement for Bids for the construction of this project, having examined the Drawings and Specifications with related documents and the site of the proposed work, and being familiar with all of the conditions surrounding the construction of the proposed project, including the availability of materials and labor, hereby proposes to furnish all labor, materials and supplies, and to construct the project in accordance with the CONTRACT DOCUMENTS, within the time set forth therein, and at the price(s) stated below. This price(s) is to cover all expenses including overhead and profit incurred in performing the Work required under the CONTRACT DOCUMENTS, of which this proposal is a part.

**BID SCHEDULE
WEST SIDE LIFT STATION REPLACEMENT**

The Contractor is directed to Section 01025 “Measurement and Payment” for the methods and limits for payments to the Contractor for the pay items listed below.

<u>Item No.</u>	<u>Description</u>	<u>Unit</u>	<u>Est. No. of Units</u>	<u>Unit Price Bid</u>	<u>Total for Item</u>
02227.01	Rock Removal Base Cost	CY	200	\$70.00	\$14,000.00
				Dollars and Cents	
				Seventy Dollars and 00/00	
				(Unit Price in Words)	
02227.02	Rock Removal Premium Cost	CY	100		
				Dollars and Cents	
				(Unit Price in Words)	
02270.00	Erosion Control				
02270.01	Silt Fence – Type A	LF	266		
				Dollars and Cents	
				(Unit Price in Words)	
02270.02	Silt Fence – Type C	LF	490		
				Dollars and Cents	
				(Unit Price in Words)	
02270.03	Construction Exit	EA	1		
				Dollars and Cents	
				(Unit Price in Words)	
02601.00	Manholes				
02601.01	Standard 5’-0” Manhole includes base, cone, riser, frame and cover, complete, 0’-6’ depth	EA	3		
				Dollars and Cents	
				(Unit Price in Words)	
02601.02	5-0” Manhole via CUT– IN includes base, cone, riser, frame and cover, complete, 0’-6’ depth	EA	1		
				Dollars and Cents	
				(Unit Price in Words)	

**BID SCHEDULE
WEST SIDE LIFT STATION REPLACEMENT**

The Contractor is directed to Section 01025 “Measurement and Payment” for the methods and limits for payments to the Contractor for the pay items listed below.

<u>Item No.</u>	<u>Description</u>	<u>Unit</u>	<u>Est. No. of Units</u>	<u>Unit Price Bid</u>	<u>Total for Item</u>
02601.03	Standard 5'-0" Grinder Manhole A2 (Sheet PS1) with Grinder Invert (per Details SS-1C & SS-1A, sheet D1) includes <i>inline sewage grinder, controls, and associated appurtenances</i> , base, cone, riser, frame and cover complete.	LS	1	_____ Dollars and Cents _____ (Unit Price in Words)	
02601.04	5'-0" Manhole Additional Vertical Feet	VF	47	_____ Dollars and Cents _____ (Unit Price in Words)	
02604.00	Manhole/Wetwell Coatings				
02604.01	Coating new 11.5'x10' Wetwell	VF	25	_____ Dollars and Cents _____ (Unit Price in Words)	
02604.02	Coating new 5'-0" Diameter Manholes	VF	76	_____ Dollars and Cents _____ (Unit Price in Words)	
02732.00	Sanitary Sewer Force Mains				
02732.01	16" PE4710 DR11 HDPE Force Main, IPS	LF	70	_____ Dollars and Cents _____ (Unit Price in Words)	
02732.02	16" Plug Valve – Complete with valve box	EA	1	_____ Dollars and Cents _____ (Unit Price in Words)	

**BID SCHEDULE
WEST SIDE LIFT STATION REPLACEMENT**

The Contractor is directed to Section 01025 “Measurement and Payment” for the methods and limits for payments to the Contractor for the pay items listed below.

<u>Item No.</u>	<u>Description</u>	<u>Unit</u>	<u>Est. No. of Units</u>	<u>Unit Price Bid</u>	<u>Total for Item</u>
02732.03	18” Plug Valve – Complete with valve box	EA	1	_____ Dollars and Cents _____ (Unit Price in Words)	
02736.00	Sanitary Sewer				
02736.01	18” Dia. ASTM F679 PS115 PVC, All Depths	LF	122	_____ Dollars and Cents _____ (Unit Price in Words)	
11310.00	Submersible Sewage Pump Station				
11310.01	Lift Station – Complete, including, site work, grading, fencing; all piping, valves and fittings to the 8”x16” reducer; water service, vaults and all interior vault components, wetwell, all electrical work, concrete, telemetry, access road & turn around, as well any related materials not provided by the city. Owner will provide the following, the Flygt Triplex Submersible LS package, Generator and ATS as outlined in Appendix A of specifications.	LS	1	_____ Dollars and Cents _____ (Unit Price in Words)	
02931.01	Permanent Grassing	LS	1	_____ Dollars and Cents _____ (Unit Price in Words)	

**BID SCHEDULE
WEST SIDE LIFT STATION REPLACEMENT**

**The Contractor is directed to Section 01025 “Measurement and Payment” for
the methods and limits for payments to the Contractor for the pay items
listed below.**

Total Amount Base Bid: \$ _____

(Price in Words)

NOTE: Amounts shall be shown in words and figures; the amount written in words shall take precedence.

BIDDER hereby agrees to commence work under this contract on or before a date to be specified in a written "Notice to Proceed" from the OWNER and to fully complete WORK within a total construction time of (270) consecutive calendar days of the date specified in this "Notice to Proceed".

BIDDER acknowledges receipt of the following addenda:

Addendum No.	Date Received

BIDDER agrees to perform all of the construction of the project complete with appurtenances and accessory work described in the Specifications and shown on the Drawings for the above scheduled price(s).

The above scheduled price(s) shall include all labor, materials, bailing, shoring, removal, overhead, profit, insurance, etc., to cover the finished work of the several kinds called for.

BIDDER understands that OWNER reserves the right to reject any or all bids and to waive any informalities in the bidding.

BIDDER agrees that his bid shall be good and may not be withdrawn for a period of sixty (60) calendar days after the scheduled closing time for receiving bids.

SECTION 01025

MEASUREMENT AND PAYMENT

PART 1 GENERAL

1.01 SCOPE OF WORK

- A. This Section describes the methods by which measurement will be made of the quantities for which payment will be made for the PROJECT.
- B. The project is to be bid as one (1) contract:

1.02 MEASUREMENT OF WORK

- A. WORK shall be measured by the ENGINEER or his representative, with assistance from the CONTRACTOR prior to preparation of a payment request by the CONTRACTOR.
- B. Unit quantities that are measured in place shall be measured monthly. The CONTRACTOR shall give the ENGINEER a minimum of two days notice for making all required measurements.
- C. Materials that must be measured as delivered shall be measured at the time of delivery by the ENGINEER or his representative; the CONTRACTOR shall provide sufficient advance notice so that such measurements can be made.
- D. WORK completed shall be measured for completion against the schedule of values provided by the CONTRACTOR in accordance with the General Conditions. Related work necessary for a complete and operational job, such as relocation of mail boxes removal of trees, relocation of utilities, field engineering, clearing and grubbing, traffic control, etc., not specifically identified as a pay item shall be included in the unit price bid. No additional payments will be made for such activities.

1.03 PROGRESS PAYMENTS

- A. Progress payments shall be based on the quantity of units installed.
- B. All items of WORK not specifically listed in the Bid Schedule shall be considered incidental to the construction, and the cost of all such work and material shall be included in the prices bid for various items listed.
- C. All items listed for measurement and payment shall include all machinery, plant, materials and labor, etc., to successfully and satisfactorily complete WORK specified.
- D. Payment: The CONTRACTOR will receive payment only for the items listed in the Bid Schedule of his contract, and no separate payments will be made for the work under any section of the CONTRACT DOCUMENTS except as provided for in the Bid Form. Where measurements are required to be made by the ENGINEER, for the payment of a pay item, the failure of the CONTRACTOR to give the adequate notification or failure of the CONTRACTOR to give the ENGINEER assistance for the measurement shall result in the forfeiture of payment for the work or item which was not measured.

- E. WORK to be paid for as a "Lump Sum" shall be measured for completion against the "Schedule of Values" provided by the CONTRACTOR. The "Schedule of Values" shall be submitted at the preconstruction conference and shall include quantities and prices of items aggregating the total "Lump Sum" and will subdivide the work into component parts in sufficient detail to serve as the basis for progress payments during construction.

PART 2 PRODUCTS

2.01 STORED MATERIALS

Partial payment shall be made for approved materials stored at the project site, provided invoices for said materials are furnished in accordance with payment request submittal.

PART 3 EXECUTION

3.01 SITE PREPARATION (Section 02100)

No separate measurement or payment will be made for site preparation of water lines or other pipes, nor for any other appurtenance facilities such as valves, fire hydrants, etc. Payment for all work shall be included in the unit prices bid per linear foot of the various sizes and type of pipe laid or for the number of units installed for valves, fire hydrants, etc. as provided for in contract bid Schedule.

3.02 EARTHWORK FOR UTILITIES (Section 02225)

No separate measurement or payment will be made for trench earth excavation for sewers, waterlines or other pipes, nor for any other appurtenant facilities such as wet wells, manholes, valves, fire hydrants, piers and pipe protection or encasement. Payment for all such excavation shall be included in the unit prices bid per linear foot of the various sizes and type of pipe laid as provided for in contract Bid Schedule. Where special bedding or cradles are shown on Drawings, or required by ENGINEER, no allowance shall be made for extending earth excavation in trenches to the bottom of such bedding or cradles.

3.03 ROCK REMOVAL (Section 02227)

- A. Quantities for rock removal shall be expressed in cubic yards, as defined below, in accordance with the plans and specifications.
- B. If rock is encountered, the CONTRACTOR is to expose the rock for the length of the proposed trench. The OWNER or ENGINEER shall then attain sufficient topographic data to establish the limits of the rock to be excavated. CONTRACTOR is not entitled to payment for rock removal without allowing the Engineer to establish the limits of the rock to be excavated.
- C. The quantity of rock to be paid for shall be calculated from the upper surface data obtained to one foot below the pipe invert multiplied by a maximum three foot trench width. No additional payment shall be made for manhole excavation or benching. The price for this work shall be included in the unit price bid for rock excavation.

3.04 ROCK REMOVAL PREMIUM COST (Section 02227)

- A. Quantities for rock removal premium cost shall be the same as described in Section 3.04.
- B. Payment for rock removal premium cost shall be made for the quantities determined in the manner specified in Section 3.04. The unit price for rock removal premium cost shall be for all additional costs for rock excavation which, in the opinion of the Contractor, Engineer and Owner, are in excess of the base cost, including but not limited to extra blasting protection, closer grouping of blasting holes, blasting monitoring, additional detonator caps, wider trench width, blasting in water, etc. The contractor shall not bid less than zero (bid a deduct) for the premium cost. Any bids containing a deduct will be declared non-responsive and rejected by the OWNER.

3.05 SILT FENCE (Section 02270)

- A. Quantities for silt fence shall be expressed in linear feet in accordance with the plans and specifications. Silt fence used in sediment traps shall be measured and paid for under this item. Dimensions shall be measured and the quantity shall be calculated from such measured dimensions.
- B. Payment for silt fence installed under these specifications shall be made for the quantities determined in the manner specified above. This amount, so paid, shall be compensation in full for furnishing all labor, materials, tools, equipment, services and other work in connection with or incidental to the construction of this bid item. Specifically, this bid item shall include the costs of removing the accumulated silt to maintain effective filtration and removal of the silt fence itself after soil stabilization is achieved to the satisfaction of the OWNER.

3.06 CONSTRUCTION EXIT (Section 02270 & Detail Co on Erosion Control Plan)

- A. The basis of payment for this item shall be lump sum based on percentage of work complete. This amount, so paid, shall be compensation in full for all labor, equipment and materials necessary to provide and maintain the construction exit throughout this contract.

3.10 STANDARD/CUT-IN/~~GRINDER~~ MANHOLE (Section 02601)

- A. Standard manholes shall be paid for on the basis of 0 to 6 feet of depth. Manholes which are less than 6 feet in depth shall be paid for at the price bid for this pay item. Manholes which are greater than 6 feet in depth shall be paid for under this pay item plus pay item 02601.102 "Additional Vertical Feet of Manhole". The depth of the manhole shall be measured to the nearest tenth (1/10) foot from the invert of the manhole to the top of the frame and cover.
- B. The price bid shall include, but not be limited to, all labor, equipment and material shown or indicated (except the additional vertical feet of manhole) earthwork and rock removal required for excavation, all dewatering of excavations, manhole base section, concrete inverts, coating of interior, riser sections, brick collars, manhole steps, joint seals, cone section, brick courses for adjusting the manhole to grade, stubs for sewer and forcemain connections, all compaction, tamping and backfilling, testing, cleanup and removal of debris, crushed stone, and all other items required to install the manholes as specified or indicated in the CONTRACT DOCUMENTS.

- B. No separate payment shall be made for manholes constructed over existing sewers. They shall be paid for as a standard manhole.

3.11 ADDITIONAL VERTICAL FEET OF MANHOLE (Section 02601)

- A. The additional depth of a manhole over 6 feet as measured to the nearest tenth (1/10) foot from the invert of the manhole to the top of the frame and cover will be paid for under this pay item.
- B. The price bid shall include, but not be limited to, all labor, equipment and material shown or indicated (except the standard manholes, 6 feet or less in depth), flexible boots, earthwork and rock removal required for excavation, all dewatering of excavations, riser sections, brick collars, manhole steps, joint seals, cone section, stubs for sewer and forcemain connections, all compaction, tamping and backfilling, cleanup and removal of debris, and all other items required to install the manholes as specified or indicated in the CONTRACT DOCUMENTS.

3.12 STANDARD FRAME AND COVER (Section 02601)

Payment for standard frame and covers shall be the actual number installed by the CONTRACTOR and approved by the ENGINEER.

3.13 BOLT-DOWN FRAME AND COVER (Section 02601)

Payment for bolt-down frame and cover shall be the actual number installed by the CONTRACTOR and approved by the ENGINEER.

3.14 MANHOLE/WETWELL COATINGS (Section 02604)

- A. Manhole/wetwell coatings shall be paid for at the unit price bid for each vertical foot or wetwell coated as measured to the nearest tenth from the invert of the manhole or wetwell to the top of the manhole/wetwell wall.
- B. The price bid shall include, but not be limited to, all labor, equipment and material shown or indicated, surface preparation, chimney seal, cleanup and removal of debris, and all other items required to install the coatings as specified or indicated in the CONTRACT DOCUMENTS.

3.15 FORCE MAIN (Section 02732)

- A. Basis of payment for force mains and appurtenances shall be length of force main. Length of force main will be measured from limits shown or indicated, and will be determined by measurement along centerline of pipe actually furnished and installed.
- B. Price shall include equipment required, fittings, glands, bolts, excavation, replacement of disturbed signs, mailboxes and mailbox approaches and departures, fences, etc., drainage ditches, etc., the maintenance of backfilled trenches by use of gravel or other means, rock excavation, removal and disposal, reaction blocking, testing, backfill and compaction, cleanup, and all other incidental work to place force main as shown or indicated in CONTRACT DOCUMENTS.

3.16 FITTINGS (Section 02732)

No separate measurement or payment will be made for fittings. Fittings shall be included in the cost of the pipeline.

3.17 VALVES (Section 02732)

- A. The quantities of the various sizes and types of valves will be the actual number installed by the CONTRACTOR and approved by the ENGINEER.
- B. The price bid shall include, but not be limited to, the valve, all labor, necessary equipment, fittings, joint restraints, blocking, concrete pad, valve box or manhole. Valves shall be paid for at the unit price bid.

3.18 SANITARY SEWER (Section 02736)

- A. The quantities of pipe sewers, for which payment will be allowed, shall be expressed in linear feet for each size and type of pipe and applicable depth as shown in the Bid Schedule and shall be the horizontal length of sewer installed complete in place as measured along the centerline of the pipe from the centerline of the manhole to the centerline of the next manhole. The applicable vertical depth shall be measured from the original ground surface to the invert of the sewer and shall be as shown in the Bid Schedule.
- B. The price bid shall include, but not be limited to, the pipe material shown or indicated, all labor and equipment required for the installation of the sewer pipe to the depths indicated or required, clearing and removal and disposal of clearing debris, stripping, storing and replacement of top soil in lawn and garden areas, excavation, dewatering of trenches, removal and replacement of signs, mailboxes, and pipes in the path of construction activities, replacement of mailbox approaches, curbs and gutters, fences, etc., protection of existing utilities (both overhead and underground), storm pipes, culverts, drainage ditches, all benching, sheeting and bracing, crushed stone bedding, tamping and compaction and backfilling, traffic maintenance and protection, dressing and final grading, testing, cleanup, and all other work incidental to place the sewers as shown or indicated in the CONTRACT DOCUMENTS.
- C. No separate payment shall be made for connections to existing sewer manholes or existing lines. The cost of this work shall be included in unit price bid for other items of work. Service connections are to be paid for separately.

3.20 PROTECTION, RELOCATION AND RESTORATION OF EXISTING UTILITIES
(Section 02750)

No separate measurement or payment will be made for protection, relocation and restoration of existing utilities for water lines or other pipes, nor for any other appurtenant facilities such as valves, fire hydrants, etc. Payment for all such work shall be included in the unit prices bid per linear foot of the various sizes and type of pipe laid as provided for in contract Bid Schedule.

3.21 SITE RESTORATION (Section 02905)

No separate measurement or payment will be made for site restoration. Payment for all such work shall be included in the unit prices bid per linear foot of the various sizes and types of pipe laid as provided for in the contract Bid Schedule.

3.22 GRASSING (Section 02931)

Payment for all grassing shall be bid per linear foot of construction and shall include all materials, machinery and labor necessary to maintain vegetated areas until plant establishment has been achieved to the satisfaction of the ENGINEER and OWNER.

3.23 CONCRETE RESTRAINT ANCHORS (Section 02660)

No separate measurement or payment will be made for concrete restraint anchors. These shall be included in the cost of the forcemain, abandonment, valves, etc.

3.24 SUBMERSIBLE SEWAGE LIFT STATION – COMPLETE (Section 11310, Drawings)

The basis of payment for this item shall be lump sum to include all labor, equipment and materials, clearing, grubbing, excavation, backfill, earthwork, gravel access road and turn around complete, concrete site for the compound area, electrical work, telemetry, fencing, piping connections, piping, pump setting, installation and connection of equipment, concrete, wetwell, **coatings**, cranes/hoists, valve vault, cushion check valves, plug valves, fittings, bypass connections, water service connections, site dressing, grassing, cleanup, all equipment, sensors and controls, power service coordination, start up and testing, and all other items as specified or indicated in the CONTRACT DOCUMENTS and on the CONSTRUCTION PLANS. **Owner will provide the following, the Flygt Triplex Submersible LS package, Generator and ATS as outlined in attached documents (see Appendix A for detailed outline of materials included).**

3.25 **GRINDER MANHOLE – COMPLETE (Section 02601)**

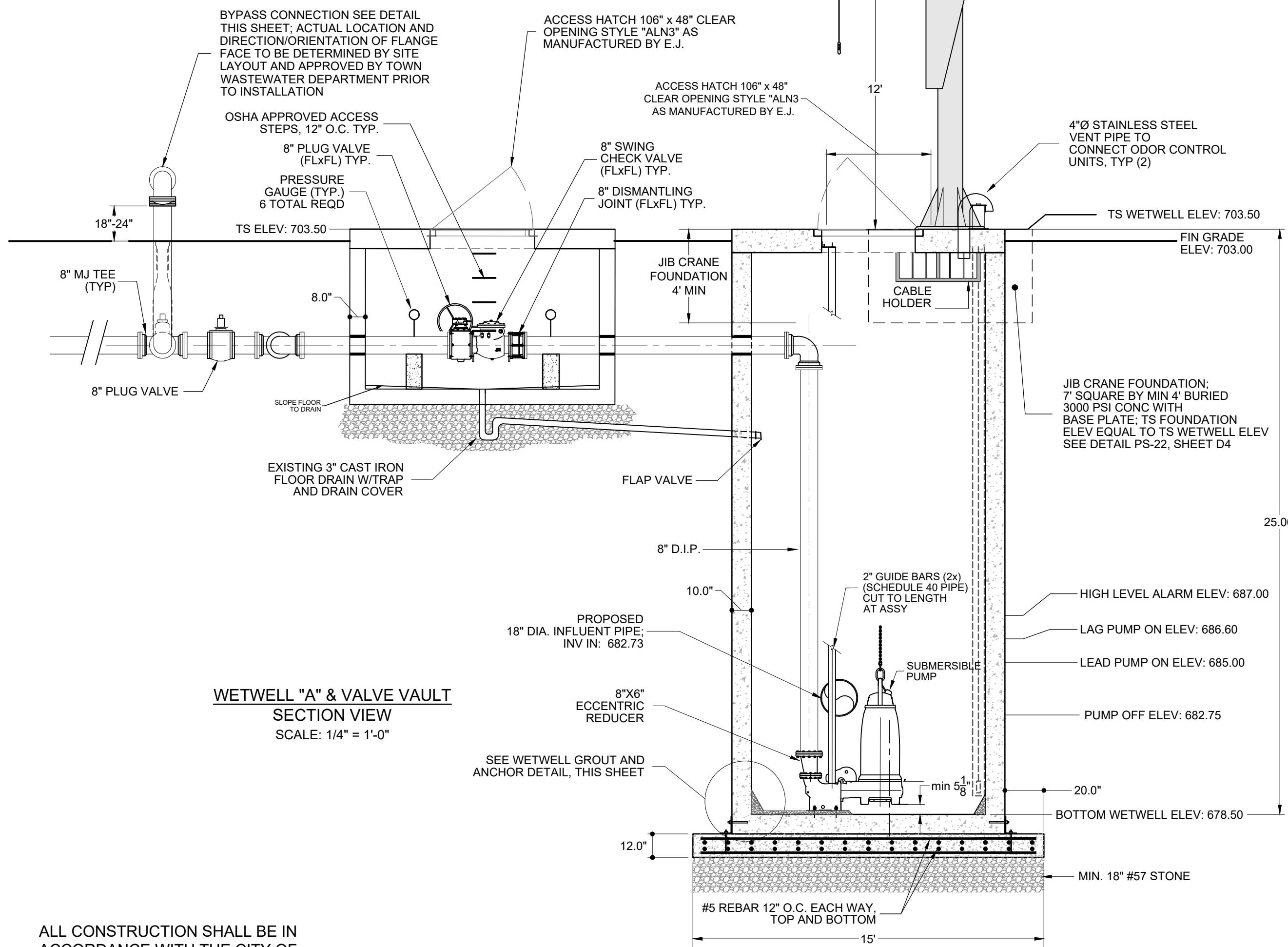
A. Grinder manholes shall be paid for on the basis of Lump Sum. No additional payment shall be made for additional depth.

B. The price bid shall include, but not be limited to, all labor, equipment and material shown or indicated, earthwork required for excavation, all dewatering of excavations, manhole base section, grinder inverts (per Details SS-1C & SS-1A, Sheet D1), inline sewage grinder, controls, and associated appurtenances, riser sections, brick collars, manhole steps, joint seals, cone section, brick courses for adjusting the manhole to grade, all compaction, tamping and backfilling, testing, cleanup and removal of debris, crushed stone, and all other items required to install the manholes as specified or indicated in the CONTRACT DOCUMENTS.

END OF SECTION

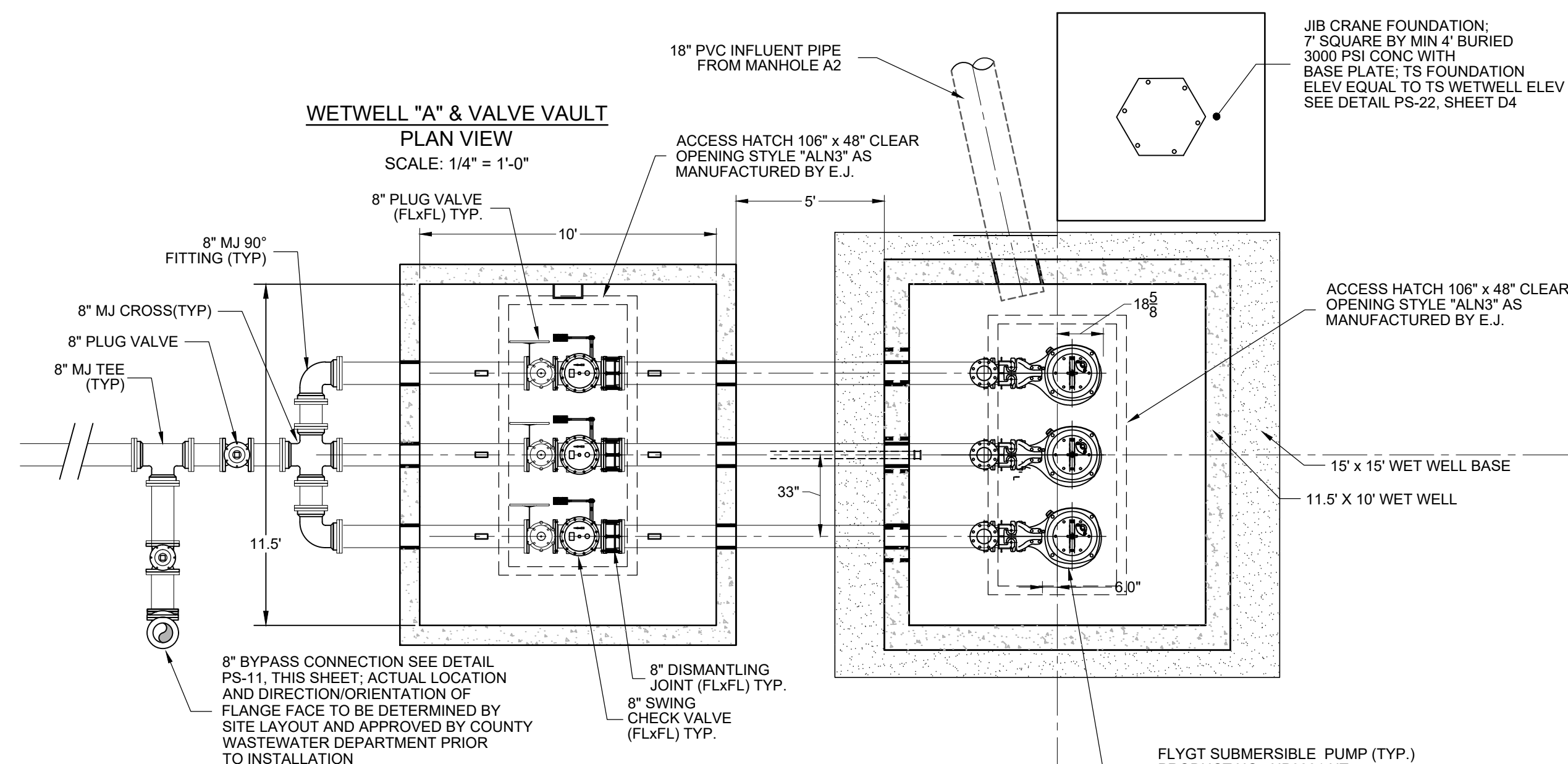
McMASTER-CARR FOUNDATION-MOUNT ROTATING JIB CRANE.
4000 LBS. CAPACITY, 14' SPAN, 12' UNDER-BEAM CLEARANCE MODEL 3244T53
ANCHOR BOLTS MODEL 3244T19

HOIST SHALL BE CM LODESTAR ELECTRIC CHAIN HOIST460 VAC.
MOTORIZED TROLLEY MOUNT, MODEL 3316T987 WITH 30' LIFT
CONTRACTOR SHALL SUBMIT SHOP DRAWINGS OF HOIST AND CRANE TO
DESIGN ENGINEER FOR APPROVAL PRIOR TO INSTALLATION



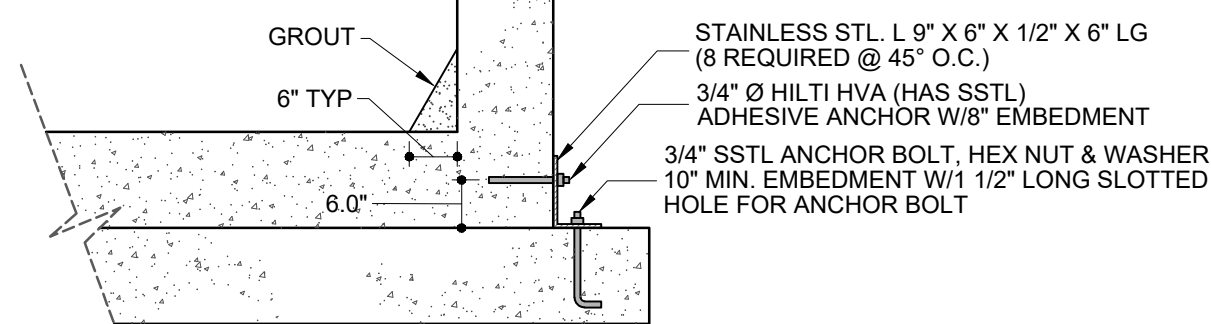
WETWELL "A" & VALVE VAULT
SECTION VIEW
SCALE: 1/4" = 1'-0"

ALL CONSTRUCTION SHALL BE IN
ACCORDANCE WITH THE CITY OF
JEFFERSON'S STANDARD DETAILS AND
SPECIFICATIONS, LATEST EDITION



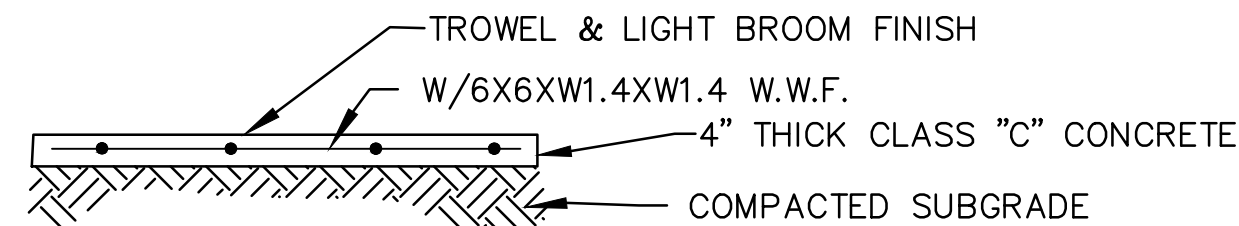
WETWELL "A" & VALVE VAULT
PLAN VIEW
SCALE: 1/4" = 1'-0"

- SHEET NOTES:**
- CITY TO PROVIDE FLYGT LIFT STATION PACKAGE AND GENERATOR PACKAGE. (SEE APPENDIX A OF SPECIFICATIONS FOR A DETAILED OUTLINE OF MATERIALS PROVIDED). IF FLYGT LIFT STATION PACKAGE, GENERATOR AND TRANSFER SWITCH ARE DELIVERED TO CITY PROPERTY PRIOR TO CONSTRUCTION, CONTRACTOR SHALL BE RESPONSIBLE TO RETRIEVE SAID EQUIPMENT FROM CITY PROPERTY AND DELIVER TO JOB SITE.
 - SEE ELECTRICAL PLANS FOR ELECTRICAL REQUIREMENTS.
 - FOR ALL PIPE PENETRATIONS THROUGH CONCRETE WALL USE LINK SEAL WS PRODUCTS.
 - ALL PIPING FROM PUMPS TO DISCHARGE OF VALVE VAULT TO BE FLANGED D.I.P.
 - ALL DIP SHALL HAVE INTERIOR COATING AS PER SPECIFICATION 18000
 - ALL DIP INSIDE THE WETWELL THROUGH AND IN VALVE VAULT SHALL HAVE EXTERIOR COATING AS PER SPECIFICATION 18001
 - ALL MANHOLES AND WETWELL SHALL BE COATED AS PER SPECIFICATIONS; SEE SECTION 02603A.

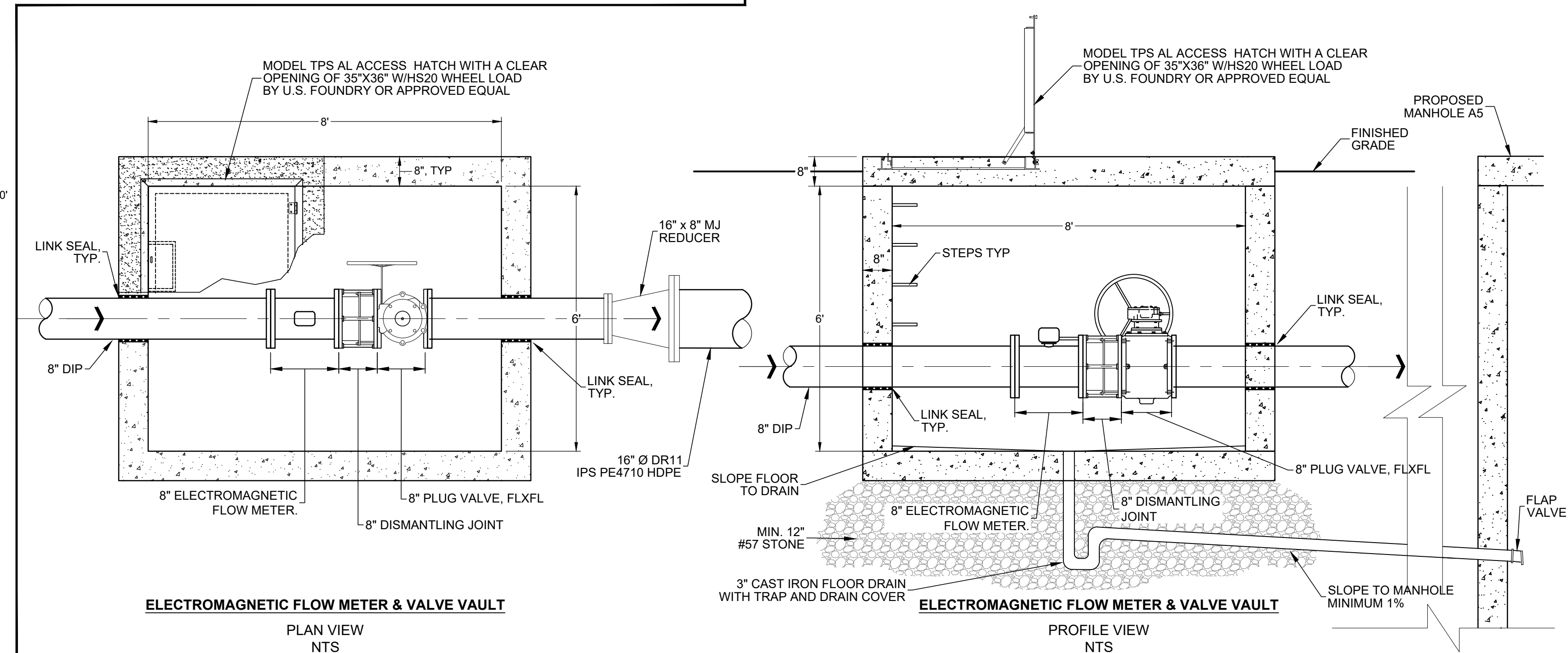


WETWELL GROUT AND ANCHOR DETAIL
SCALE: 1/2" = 1'-0"

STATION PAD DETAIL



- CONCRETE PAD NOTES:
- 3/4" DEEP SAWED CONTRACTIONS JOINTS WITH 1/4" RADIUS REQUIRED AT 15 FT. MAXIMUM SPACING.
 - 1/2" EXPANSION JOINTS ARE REQUIRED WHERE CONCRETE PAD ABUTS ANOTHER STRUCTURE.
 - ALL JOINTS SHALL BE SEALED.

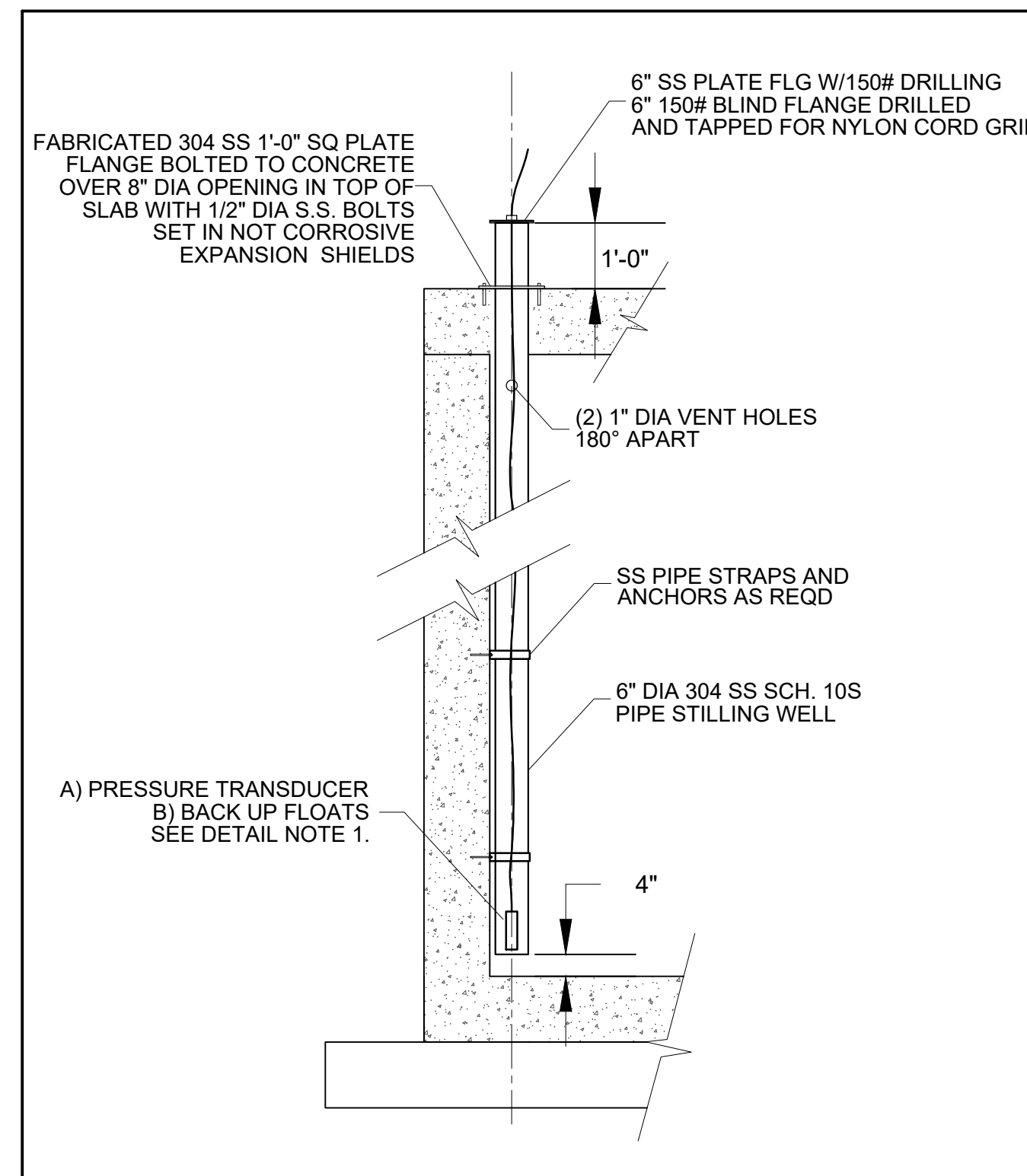


ELECTROMAGNETIC FLOW METER & VALVE VAULT
PLAN VIEW
NTS

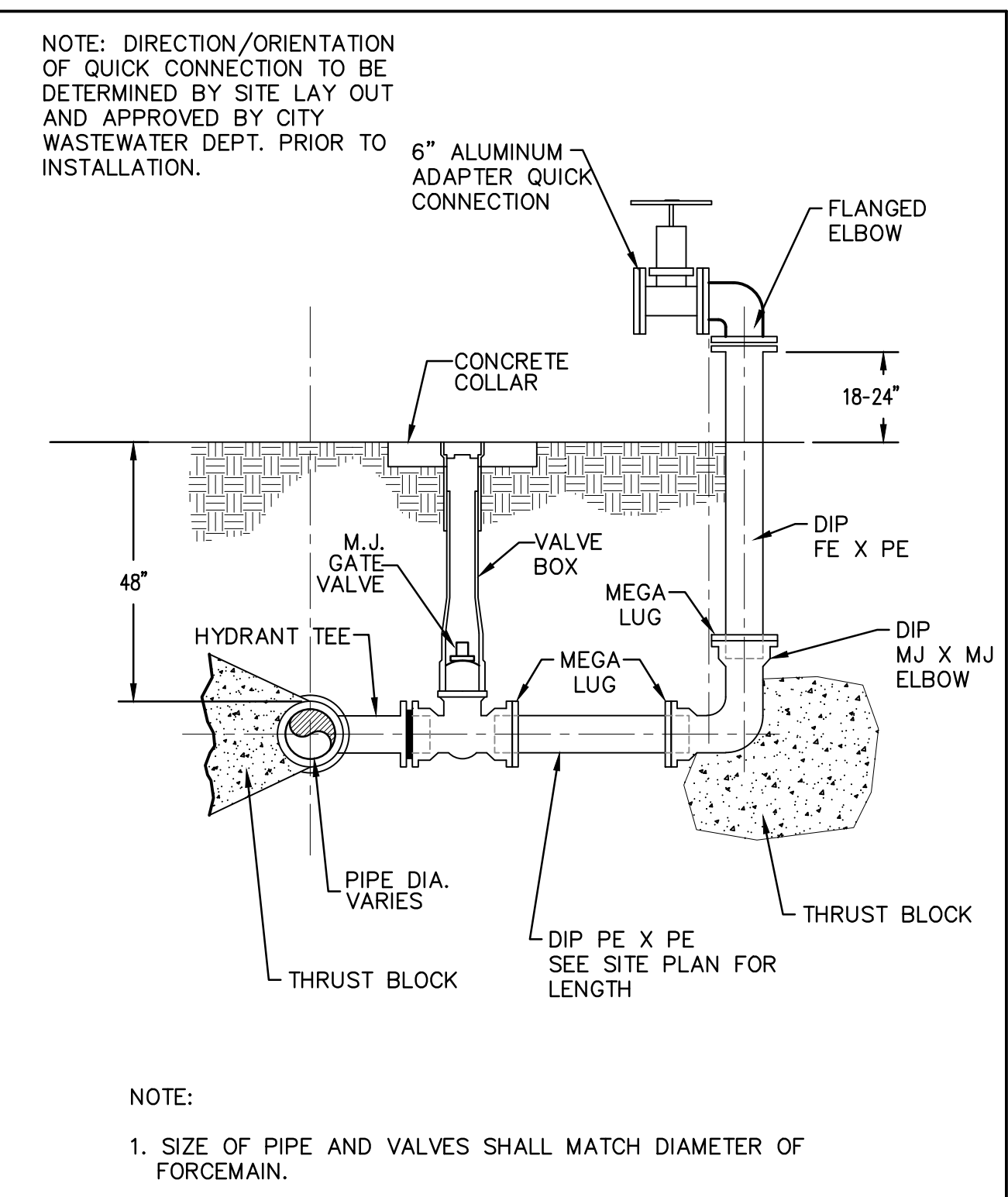
ELECTROMAGNETIC FLOW METER & VALVE VAULT
PROFILE VIEW
NTS

MAG METER VAULT NOTES

- MAG METER SHALL BE 8" ROSEMOUNT MODEL 8750WD W/ TRANSMITTER W/ THE FOLLOWING OPTIONS:
 - M - REVISION 4 ELECTRONICS
 - W - REMOTE WALL MOUNT
 - 1 - AC POWER
 - A - 4-20mA OUTPUT - DIGITAL HART
 - FLANGED
 - CONDUIT ENTRY = 1/2" - 14NPT
 - POLYURETHANE LINING
 - SS ELECTRODE
 - 2 MEASUREMENT ELECTRODES, BULLETHOSE
 - FLANGES = SLIPON RAISED FACE CARBON STEEL
 - FLANGE = CLASS 150
 - DISPLAY = LCD W/LOCAL OPERATOR INTERFACE
 - GROUNDING RINGS = 316L SS
 - POTTED JUNCTION BOX W/ 100 L.F. COMBO CABLE AND GLAND FOR USE IN CONDUIT
 - CALIBRATION CERTIFICATION - ISO
- DISMANTLING JOINT SHALL BE BY ROMAC OR APPROVED EQUAL.
- VAULT SHALL BE PRECAST ASTM C193 (MIN 3000 PSI) W/ HS20 SHEEL LOADING.
- LCD DISPLAY SHALL BE INSIDE FENCE OF NEW LIFT STATION SITE.



- NOTES:**
- 2 EACH STILLING WELLS REQUIRED, ONE FOR TRANSDUCER, ONE FOR BACKUP FLOATS



- NOTES:**
- SIZE OF PIPE AND VALVES SHALL MATCH DIAMETER OF FORCEMAIN.
 - ALL DIP SHALL BE COATED PER SPECIFICATION 18000.

CITY OF JEFFERSON PUBLIC UTILITIES DEPARTMENT				CITY OF JEFFERSON PUBLIC UTILITIES DEPARTMENT			
JOB TITLE	SHEET TITLE	DRN. BY:	REV. NO. BY DATE	JOB TITLE	SHEET TITLE	DRN. BY:	REV. NO. BY DATE
STANDARD DETAIL	STILLING WELL DETAIL	EMI	A EMI 7-31-07	STANDARD DETAIL	BYPASS CONNECTION	EMI	A EMI 7-31-07
		APPD. BY:	DATE: AUGUST 2007			APPD. BY:	DATE: JANUARY 2006
			FILE No. 05082/PS-12.dwg				FILE No. 05082/PS-11.dwg
			SCALE: N.T.S.				SCALE: N.T.S.

ENGINEERING MANAGEMENT TRUST SOLUTIONS
303 Swanson Drive, Lawrenceville, GA 30043
phone 770-962-1387 fax # 770-962-8010
www.emtinc.biz

DATE	NO.	DESCRIPTION
02/22/2023	A	RELEASED FOR PREP TECHNICAL REVIEW
02/22/2023	B	RELEASED FOR EROSION CONTROL REVIEW
02/22/2023	C	RELEASED FOR BIDS
03/22/2023	D	ADDENDUM NO. 1 JIB CRANE HOIST MODEL CHANGE

EMI ENGINEERING MANAGEMENT TRUST SOLUTIONS
Experience & Trust

WEST SIDE LIFT STATION REPLACEMENT
FOR THE
CITY OF JEFFERSON
PROJECT

WEST SIDE LIFT STATION DETAILS
SHEET TITLE
DESIGN BY: DSP
DRAWN BY: DSP
CHECKED BY: GKB

STAMP
PROFESSIONAL ENGINEER
NO. 48202
DATE: 01/12/2023
S. PATTERSON

02-13-2023
DATE
12033
JOB NUMBER
z:\projects
FILE LOCATION

PS2