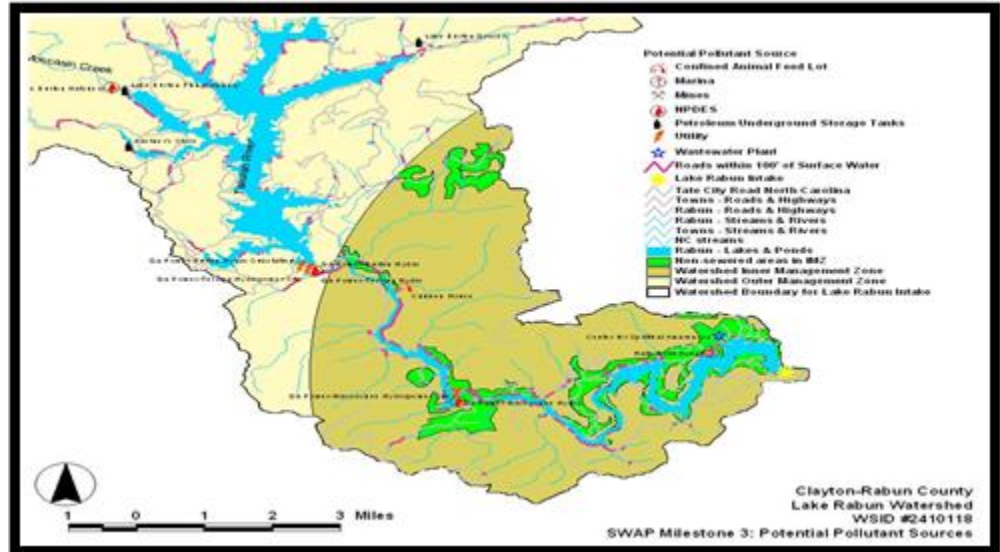


Source Water Assessment Programs Various Locations Throughout Georgia

Primary Contact:

Mr. Jimmy Matthews,
Executive Director
Georgia Rural Water
Association
P. O. Box 383
Barnesville, GA 30204
(P) 770.358.0221
(F) 770.358.4379
www.grwa.org



The 1996 reauthorization of the federal Safe Drinking Water Act (SDWA) included an amendment requiring states to develop programs to assess sources of drinking water and encourage the establishment of protection programs. This amendment created the need for the Georgia EPD to periodically require Source Water Assessment Programs (SWAP) to identify potential pollutants of concern, analyze the risk to public health, and provide data and analyses for creation of a Source Water Protection Plan. The study couples cartography with hydrologic analysis to locate the pollutants that are present, and to discern the likelihood of human exposure. Source water protection is a proactive effort to protect drinking water sources before they become contaminated.

The Georgia Rural Water Association contracted with Engineering Management Inc. to conduct a Source Water Assessment Program for City of Clayton, City of Blairsville and the Clayton-Rabun County Water and Sewer Authority.

-continued-



Source Water Assessment Programs Various Locations Throughout Georgia

City of Blairsville
P. O. Box 307
Blairsville, GA 30514-0307
(706) 745-2000

City of Clayton
99 N. Church Street
Clayton, GA 30525
(770) 782-4512

Clayton-Rabun County Water
and Sewer Authority
99 N. Church Street
Clayton, GA 30525
(706) 782-4512

The City of Blairsville is the sole provider of water and sanitary sewer services in Union County, Georgia. The service area includes the watershed above the Nottely River intake. After completing the SWAP study, EMI's recommendations included enforcement of the Water Supply Watershed Protection and Soil Erosion and Sedimentation Control Ordinances, strict zoning ordinances, and public education. By taking these actions, the City of Blairsville can ensure the quality of the water supply in the Nottely River Watershed

The City of Clayton's water supply area includes the watershed above Blacks Creek. A portion of this area is also part of the Chattahoochee National Forest. Upon final analysis, EMI recommended that the City continue to enforce the Water Supply Watershed Protection Plan and coordinate efforts with the US Forest Service to ensure continued use of the Chattahoochee National Forest Land and Resource Management Plan.

The Clayton-Rabun County Water and Sewer Authority relies on the Tallulah River and surrounding lakes as a water source. The lakes within the watershed above Mathis Dam serve as a source of hydropower, water supply and recreation. Although all three of these purposes can be served concurrently, careful management must be exercised in order to protect water quality at the supply source. After completing the study, EMI recommended a combination of methods including enforcement of the Watershed Protection Plan, strict zoning ordinances, and public education to ensure the quality of the water supply in the Lake Rabun Watershed.