

**RFP #2020-10**  
**REQUEST FOR PROPOSALS**  
**FOR DESIGN SERVICES OF**  
**EARTHEN DAM, RESERVOIR, AND INTAKE STRUCTURE**  
**City of Jefferson, Jackson County, Georgia**  
**Parks Creek Water Supply Program**

**October, 2020**

**1. PURPOSE**

The City of Jefferson Water System (herein referred to as the City) intends to select a professional engineering design firm to provide surveying, geotechnical services, design, permitting, bidding and construction phase services for the development of the Parks Creek Reservoir and Dam project. Firms submitting qualifications for the project shall be designated as an Engineer of Record (EOR) by the Georgia EPD Safe Dams Program.

These improvements include:

1. 166 Acre pump storage Reservoir on Parks Creek
2. Raw Water Pumping Facility at the North Oconee River
3. Approximately 11,000 Linear feet of Raw Water Main from the intake to the reservoir site
4. Raw Water pumping structure and facility at the Dam and Reservoir including approximately 2,100 liner feet of raw water main to Lyle Field Road

Attached Exhibit A shows an overall location of the proposed reservoir Site.

Attached Exhibit B provides a copy of the proposed raw water line route.

Attached Exhibit C provides a copy of the USCOE Permit, and modifications.

Attached Exhibit D provides a copy of the EPD withdrawal permits.

Attached Exhibit E provides a general topographic map of the site area.

Attached Exhibit F provides the City's Required E-Verify Certificate for City contracts.

**2. PARKS CREEK WATER SUPPLY PROGRAM DESCRIPTION**

The City of Jefferson, Parks Creek Water Supply Program is being planned to fulfill long-term water supply needs through the year 2060. The City currently owns and operates the public water system infrastructure within the City and urbanizing fringe, and the new Parks Creek Water Supply Program will allow the City to supply long-term supply needs of up to 4 MGD. The Jackson County Water and Sewerage Authority (JCWSA) is a twenty-five percent (25%) participant in the Parks Creek Reservoir Project. The City of Jefferson serves as the lead agency in the Parks Creek Reservoir project. The JCWSA will have a role in the Engineer selection for the project and will be involved in progress meetings, stakeholder meetings, plan reviews and other project development activities.

The new Parks Creek Reservoir will be a pumped storage reservoir located approximately six miles northeast of the City on the upper reaches of Parks Creek. Its primary water source will be water pumped from the North Oconee River. Water will be treated at the City's existing water treatment facility on Curry Creek just off Georgia Highway 82 North. A raw water pumping facility is proposed on the North Oconee River which will fill the Parks Creek reservoir.

An additional raw water pumping facility will be designed to move water some 30,000 linear feet from the new reservoir to the City's water treatment facility. The design of the raw water line from the reservoir to the plant is underway by separate action.

Engineering Management, Inc., Lawrenceville, Georgia (EMI) is serving as the overall Program Manager for the Parks Creek Water Supply program assisting the City in the implementation of the improvements.

### **3. SCOPE OF SERVICES**

The scope of services includes field investigations, surveying, geotechnical investigations, preliminary design and detailed design, permitting, bidding and construction services for the project. Detailed work tasks are as outlined in this section. Suggested modifications to the scope shall be detailed in the Engineer's proposal. The Engineer shall provide all necessary services required for a complete design package suitable for permitting, bidding and construction of the project.

Exhibit B provides a conceptual map of the reservoir and raw water lines.

The City has completed a long process of acquisition of the reservoir site, most of the buffer areas, and is completing the acquisition of the raw water intake site, and the route of the raw water line to the reservoir. There are no acquisition services anticipated in this effort. The City will provide all site acquisition drawings to the successful design professional in digital format.

The City has completed a cultural resource survey of the project sites and there are no cultural sites involved with the project that require protection or mitigation.

The City has completed all wetlands and stream identification activities and has purchased adequate credits thereby requiring no mitigation activities.

#### **Task 1 – Project Administration, Management, and Quality Control**

Throughout all tasks, the Engineer shall provide project administration and management activities such as staffing, sub-consultant coordination, budget management, schedule management, and coordination with City/Program Manager and maintain the quality of the work products defined within this scope as consistent with applicable standards and City / Program Manager's expectations.

Project administration and management includes general internal project management based on the tasks in this Scope of Work throughout the life of the project. Engineer shall provide the following:

- Prepare for and attend project kick off meeting.
- Prepare a Project Management Plan with team member contacts, stakeholder contacts, schedule, fee/budget and sample invoice.

- Prepare a Risk Register identifying potential risks for the project and mitigating strategies.
- Prepare and submit monthly status reports including an updated project schedule, current status of the project tasks and project financials.
- Schedule and attend monthly progress meetings during design and construction with the City / Program Manager to review the current status of the Project.
- Provide meeting summaries for all Progress Meetings, design review meetings, permitting meetings, State Agency meetings or other meetings.
- For each deliverable review, provide review comment spreadsheet for all stakeholder review comments including Engineer response and action on each review comment.
- Perform quality assurance and quality control (QA/QC) reviews for the Project.
- Coordinate and manage subcontractor(s) as applicable.

#### Preliminary Investigations and Route Confirmation of raw waterline from the North Oconee River to the Proposed reservoir.

- Engineer will prepare project route maps from City-provided digital data and other publicly available information for use in project planning.
- The project designer and surveyor will coordinate with City / Program Manager and perform a site visit to walk the project route and observe the condition of the route and identify factors that may affect the design and location of the proposed pipeline, such as existing utilities, streams, buffers, wetlands, terrain, rock, permitting considerations or other observable features affecting the design and constructability of the project.
- Provide a preliminary siting confirmation and layout for the raw water pump station facility.
- Engineer will provide a brief Technical Memorandum (TM) summarizing the results of the field reconnaissance and other preliminary considerations and a concept route recommendation for review and approval by City / Program Manager. Engineer will attend a review meeting with City / Program Manager to review the TM.
- Engineer will coordinate with the Power Company for service to the new Raw Water Pump station.

#### Preliminary Investigation and Layout Confirmation of proposed reservoir and dam site

- Engineer will prepare project layout maps from City-provided digital data and other publicly available information for use in project planning.

- The project designer and surveyor will coordinate with City / Program Manager and perform a site visit to walk the reservoir site and observe the site conditions and identify factors that may affect the design and location of the proposed dam and reservoir, such as existing utilities, streams, buffers, wetlands, terrain, rock, access points, permitting considerations or other observable features affecting the design and constructability of the project.
- Provide a preliminary siting confirmation and layout for the proposed reservoir, dam and raw water pump station facility.
- Engineer will provide a brief Technical Memorandum (TM) summarizing the results of the field reconnaissance and other preliminary considerations and a concept layout recommendation for review and approval by City / Program Manager. Engineer will attend a review meeting with City / Program Manager to review the TM.

### **Task 2. Field Surveys and Investigations**

A detailed field survey shall be conducted for the proposed dam and reservoir site as well as the sites for the raw water intake facility and raw water line.

- Engineer shall provide planimetric and topographic survey work and create a topographic base file for use in the project design, permitting, and contract document preparation. The survey shall be provided in Georgia State plane coordinates.
- Geotechnical Investigations for reservoir and dam design – Engineer shall conduct a complete geotechnical investigation for the dam and reservoir design. Geotechnical scope shall be included in the proposal and generally consist of all geotechnical work necessary and commensurate with dam and reservoir design and permitting.

### **Task 3. Design Document Preparation**

The detailed design phase will consist of the preparation of drawings and specifications for permitting and construction of the proposed Dam and Reservoir, Raw Water Intake Facility, Raw Water Line from the North Oconee River to the Reservoir site and the Raw Water Pumping Facility at the Dam and Reservoir. The Raw Water Pumping Facility design at the dam will include a raw a water main to the right of way of Lyle Field Road. Elevations and detailed data of the raw water line to the WTP will be provided.

All design documents shall be prepared in accordance with City standards and State of Georgia requirements.

The design will be conducted in the following phases. Engineer will provide two (2) sets of full-size drawings and pdf's for review and coordinate and conduct workshop meetings at the 30%, 60% and 90% design milestones to review the design documents and City / Program Manager comments.

The 30% Preliminary Engineering design will consist at a minimum of the following:

- Base drawings utilizing field survey data
- Preliminary Plans indicating the proposed horizontal alignment
- Locations of tie ins and connections
- Preliminary Raw Water Pump Stations Layouts
- Preliminary opinion of probable construction cost
- Standard Construction Details
- Updated permitting requirements based on field delineation and survey results

The 60% design shall address comments received at the 30% phase and consist at a minimum of the following:

- Drawings including dam, reservoir and all pipeline profile sheets
- Valving and connection piping details
- Pump Stations Site Plans
- Pump Station Piping Layout
- Electrical Plans
- Sizing / locational analysis for air release and surge relief valves. Analysis shall incorporate surge protection devices provided.
- Erosion and sedimentation control plan and details
- Technical specifications
- Bid Form
- Updated opinion of probable construction cost

The 90% design shall address comments received at the 60% phase and consist of a full set of plans, details, specifications and bid documents. It is anticipated 90% drawings will be sufficient for project permitting.

The 100% design shall include the resolution of all review comments and incorporation of regulatory agency comments. The design documents shall be sufficient for bidding the project for construction.

#### **Task 4. Permitting**

In preparation for bidding and construction of the project, Engineer will prepare and coordinate submittals, address comments and obtain the following anticipated permits or concurrences:

- Georgia Safe Dams Permitting. Safe dams permitting shall follow Georgia EPD, Safe Dams Program Engineer Guidelines. In compliance with these requirements, the Engineer will follow the established procedures in the guidelines, including the design submittal process and the required steps in accordance with the guidelines.
- Compliance with Corps of Engineers 404 Permit Number SAS 2005 00228 and all required actions and submittals as outlined.
- Georgia EPD Technical Review for raw water transportation and pumping facilities.
- Land disturbance permit from Jackson County including any necessary modifications to the construction documents. County has delegated authority to review erosion and sedimentation control plans.
- NPDES GAR 100002 for construction stormwater discharges, project information will be provided in the design drawings for construction contractor's use in completing and submitting the project Notice of Intent (NOI).

#### **Task 5. –Bid Phase Assistance**

When approved by City / Program Manager, Engineer will assist in the bidding process for construction of the project. the project. Engineer will prepare a complete set of contract documents, including:

- Project technical specifications
- Project bid drawings including incorporation of all applicable permit review comments
- Project Bid Form
- Project Front End Documents (provided by City / Program Manager) The City will utilize the standard EJCDC® Construction Contract Documents.

Engineer will combine the City / Program Manager provided “Front End Documents” with Technical Specifications and Bid Form for a bid ready package.

It is anticipated that the dam, reservoir, pipelines and pump stations will be bid as one construction project.

Funding for the project may be associated with the Georgia Environmental Financing Authority. Procurement activities will take place in accordance with the GEFA SRF requirements (Outlined in GEFA “Exhibit C – State Revolving Fund Bid Procedures”, latest edition).

Upon advertisement of the construction project by City / Program Manager, Engineer will provide bid phase services consisting of the following specific activities:

- Maintain plan holders list
- Issue bid documents (plans and specification packages)
- Attend a Pre-Bid Conference and assist City / Program Manager in conducting the conference
- If necessary, prepare addenda to interpret, clarify, and amend the Contract Documents
- Answer technical questions from contractors during the bidding period
- Attend the bid opening in collaboration with the City and Program Manager.
- Tabulate the bids, review contractor references and perform due diligence review in coordination with City / Program Manager.
- Upon Contractor Selection, prepare 6 sets of Contract Documents

#### **Task 6 –Stakeholder Involvement and Public Outreach**

Engineer should provide budget to support to City / Program Manager for stakeholder involvement and public outreach, limited to attending up to two public meetings and providing one GIS based project overview exhibit and detailed technical drawings. City / Program Manager will develop mailing lists and maintain community contacts for stakeholders.

#### **Task 7 – Construction Phase Services**

Engineer will provide construction observation and administrative services during the construction period of the project. City / Program Manager will prepare a Notice of Award to the selected contractor, and prepare and issue a Notice to Proceed. The Engineer will provide additional administrative services during construction that will include the following items:

- Attend and assist in conducting a pre-construction conference
- Review submittals and shop drawings; produce submittal log
- Review Requests for Information; produce RFI log

- Review Periodic Requests for Partial Payments to the Contractor
- Review Change Order Requests, produce change management log
- Attend monthly progress meetings; produce agenda and minutes
- Provide contract close-out assistance (punch list support, etc.)
- Coordinate periodic onsite meetings with Corps of Engineers and Safe Dams Personnel as required
- Assist City / Program Manager in the selection of an independent geotechnical testing laboratory to perform tests and approvals of samples, materials and equipment as specified. City to compensate selected testing lab for services.
- Provide full time construction inspection and quality control in accordance with all Georgia Safe Dams requirements.
- Prepare record drawings based on the contractor's redline markup drawings, contractor's survey information, and the City / Program Manager records.
- Record drawings will be submitted by Engineer to City / Program Manager in AutoCAD, PDF and GIS formats.

#### **Data or Assistance to be Provided by City / Program Manager**

- City / Program Manager will provide construction observation in parallel to other ongoing construction projects.

#### **4. PROJECT SCHEDULE**

The overall program intends to issue the design Notice to Proceed by February 26, 2021 and the project design completed by April 30, 2022. Permitting and Procurement for a Contractor will take place in the second quarter of 2022 with construction Notice to Proceed issued by September, 2022.

Construction would be anticipated to take a maximum of 2 years with the project being able to come online no later than the first Quarter of 2025.

Engineer shall include a project schedule with their proposal, along with an assessment of the feasibility of meeting this proposed timeframe.

#### **5. SUBMITTAL DEADLINE AND DELIVERY**

- A. Eight hard copies and electronic copies on two USB Drives of the Proposal must be received by the City of Jefferson no later than 4:00 P.M. on Monday, December 21, 2020. One Copy of the cost proposal shall be provided in a separate sealed submittal.**



- B.** The Project name and Firm’s name and address must be shown on the outside of the sealed envelopes, addressed to, and delivered to:

**Ms. Priscilla Murphy, City Manager  
City of Jefferson  
147 Athens Street  
Jefferson, Georgia 30549**

**The envelopes must be clearly labeled as RFP#2020-10**

- C.** No submittals will be accepted after the deadline. Submittals received after the designated time will not be considered.
- D.** Submittals must be paper copies, appropriately bound. Emailed or faxed copies will not be accepted.
- E.** This is a Qualifications Based Selection (QBS) procedure for Professional Engineering Services, and there will be no public opening of the Proposals.

## **6. PROPOSAL CONTENTS**

Proposals should be bound with the name of the firm and name of the Project visible on the outside cover. Each submittal will be limited to forty (40) double-sided sheets addressing all aspects of the Request for Proposal.

Costs identified in Item E below shall be submitted in a separate envelope with the label of “Cost Proposal”.

To standardize responses and simplify the comparison and evaluation of responses, all submittals must be organized in the manner set forth below. The document should have a Cover Letter, Table of Contents with the following major sections, including tabs marking section locations. Sheets should be printed double-sided (20 pages, exclusive of Table of Contents, Resumes and tabs):

### **A. General Information**

1. A cover letter signed by an officer of the firm.
2. Provide a primary contact point for all correspondence related to the proposal including name, title, phone number, and email address.
3. A statement confirming that the firm meets the appropriate state licensing requirements to practice in the State of Georgia; provide proof of designation of “Engineer of Record” by the Georgia EPD Safe Dams Program. Provide Certificate of Insurance (ACCORD format preferred), including dollar limits, currently held by the firm. The City may require additional insurance related to agreements/contracts arising from this RFP. These will be discussed with the firm at the time of contract/agreement negotiation

4. A statement agreeing to all terms contained in the City's Request for Proposals document including permission for the City and its representatives to contact references, clients, contractors or others to seek information about the firm's past performance, as well as permission for those persons contacted by the City and its representatives to provide requested information.
5. A statement that the firm currently has in-house resources to perform all work required for each of the Project parts except in those specialized areas that are clearly listed in the submittal (Project Team section) as areas of work that will be subcontracted. Provide an organization chart showing the key personnel.
6. A statement by the firm certifying that, in accordance with O.C.G.A. 36-91-21 and to the best of its knowledge, there are no circumstances that would cause a conflict of interest on the part of the firm or its proposed sub-consultants or sub-contractors in performing services for City of Jefferson, and that no company or person other than bona fide employees working solely for the Consultant has been employed or retained to solicit or secure the proposed contract.
7. Describe respondent's firm by providing its full legal name, date of establishment, type of entity, short history, current ownership structure, and any recent or materially significant proposed change in ownership.
8. Identify any litigation, arbitration, or mediation claims that involved similar projects. Identify any contract or subcontract held by the firm or officers of the firm, which have been terminated. Include only those actions involving projects completed during the past 10 years. Include claims that were initiated by or against the project Owner and the Engineer under contract with the project Owner. Briefly state the nature of the claim and the outcome.

**B. Firm's Experience and Performance on Similar Projects (35 points)**

Submit the following information on past projects to illustrate the specialized expertise, demonstrated experience, applicable qualifications, and available resources of the firm with emphasis on key team members proposed for this project. The responding firm shall provide a summary of up to five (5) similar projects of similar size and nature within the last 10 years and the following information:

1. For each listed project, provide the following:
  - a) Project name, location, description, and status of the project.
  - b) Project's original contracted engineering cost and final engineering cost. Explain any difference.
  - c) Project's construction cost.
  - d) Contact information (reference name, title, email address and phone number) for Owner for each project.

2. Key project team members serving on each of the above listed projects with emphasis on the participation of team members proposed for this Project. Specialized expertise and/or resources applied during project, with concise explanations of their value and relevance to this Project.
3. Describe any issues relevant in evaluating the ability of the responding firm to handle the proposed Project.

**C. Project Team Qualifications (25 points)**

Submit proposed Project team information to include the following:

1. Organizational chart showing key personnel who will be assigned to the Project; include the name and role/responsibility of each key team member. Include only those staff members who will commit a substantial percentage of their time to the work. List the approximate number of technical staff that is expected to serve in support roles on the Project. Show reporting structure of the Project team including any sub-consultants. Include a listing of work elements that will be performed by sub-consultants and state the names of proposed sub-consultants.
2. For each key person identified, list their length of time with the firm and at least two comparable projects in which they have played a primary role. If a project selected for a key person is the same as one selected for the firm in Section B, provide just the project name and the role of the key person. For other projects provide the following:
  - a) Description of project
  - b) Role of the person
  - c) Project's original contracted engineering cost and final cost.
  - d) Project owner.
  - e) Reference information (two current names with telephone numbers and email per project).

**D. Understanding the project and approach to performing the required services (25 points)**

1. Provide a discussion of your project understanding and approach, with emphasis on modifications, deviations, or improvements to the proposed scope of services.
2. Discuss the major issues and / or risks your team has identified on this project and how you intend to address and mitigate those issues.

3. Describe your firm's project management approach and team organization during the project. Describe systems used for planning, scheduling, project execution and quality control.
4. Provide a schedule by phase and task for completing the work.
5. Identify any assumptions and services anticipated to be provided by the City / Program Manager.
6. Provide any additional information that you feel would assist the City in making this project award decision.
7. Include with their proposal a list of assumptions used to develop final scope and fee for this Project.

**E. Price and other cost considerations. (15 points) – Provide in a Separate Envelope**

Provide pricing broken down by project phases and sub tasks where appropriate. Include hours and rates for staff assigned to the project. All reimbursables, expenses, overhead, administration shall be included in the hourly rates provided.

**F. Interview (25 points)**

An interview will be held among short-listed firms at a time and date selected by the City / Program Manager. Information will be provided at a later date.

## **7. QUESTIONS AND CLARIFICATIONS**

Any questions concerning this Request for Proposals should be directed to the person listed below. No interpretation or clarification of the meaning of the instructions or scope of services will be made orally except for general information that does not require a clarification. Every request for such interpretation should be in writing, submitted by email and addressed to the individual shown below. To be given consideration, questions must be received at least fourteen (14) calendar days prior to the date fixed for the opening of qualifications. **All clarifications and any supplemental instructions will be posted on the City of Jefferson website at the following address:**

<http://www.cityofjeffersonga.com/rfps>

Please check the website periodically for updates to the Request for Proposals.

It is incumbent upon the responding firms to review the City's website for any updates or addendums to the RFQ/P on an ongoing basis. Neither the City of Jefferson nor the program manager will be held responsible for any respondent's failure to address any changes or addendums to the RFQ/P that were posted on the City's website.

Address questions to:

**Mr. Ken Peters, PE**  
**Project Manager**  
**Engineering Management, Inc.**  
**303 Swanson Drive**  
**Lawrenceville, GA 30043**  
**kpeters@eminc.biz**

## **8. EVALUATION AND SELECTION**

Submittals from each Firm will be evaluated on the basis of the information submitted, along with an analysis of other available information. The City may conduct investigations or interviews, as it deems necessary, to assist in the evaluation of the qualifications submitted. A selection committee will review the proposals and rank the Firms and will award points to each category listed in Section 6 in accordance to completeness/ responsiveness of each category. The initial evaluation is based on a total maximum score of 100 points (Items A-E). Maximum points for each category are included in Section 6.

After the initial evaluation, the City will develop a “short-list” of the top three or four Firms or teams. These “short-listed” Firms will be interviewed, at a mutually acceptable date in January, 2021. A final score based upon Items A-F will be the basis of a final selection.

It is anticipated a contract for engineering services will be entered into with the Firm that, in the opinion of the City, offers the most favorable combination of qualifications, approach, and pricing. The City reserves the right to decline awarding the contract depending upon qualifications and final proposals.

## **9. CONTRACT**

The successful respondent will be expected to enter into an Agreement with City of Jefferson as lead agency. The contract will be based upon the EJCDC® E-500, Agreement Between Owner and Engineer for Professional Services.

## **10. OWNERSHIP OF SUBMITTAL DOCUMENTS**

Upon receipt of the submittal by the City, the submittal and all included documentation shall become the property of the City, without compensation to the respondent, for disposition or usage by the City at its discretion. The City assumes no responsibility or obligation to respondent Firms and will make no payment for any costs associated with the preparation or submission of submittals. All work, including but not limited to planning, programming, cost estimates and summaries, plans, specifications, concepts, ideas, and other materials prepared by or for the respondent Firm for the City under this Request for Qualifications and any subsequent proposal shall become the property of the City. However, such provisions do not include the publication, distribution, or sale of such submittals to third parties not employed by or under contract to the City.

## **11. RESERVATION OF RIGHTS**

The City of Jefferson reserves the right to waive any informality or to reject any or all submittals, to evaluate submittals, and to select the Firm or Firms that are, in the City's opinion, in the best interest of the City.

### **ATTACHMENTS**

Attached Exhibit A shows an overall location of the proposed reservoir Site.

Attached Exhibit B provides a copy of the proposed raw water line route.

Attached Exhibit C provides a copy of the USCOE Permit, and modifications.

Attached Exhibit D provides a copy of the EPD withdrawal permits.

Attached Exhibit E provides a general topographic map of the site area.

Attached Exhibit F provides the City's Required E-Verify and SAVE Affidavits for City contracts.

**[END OF DOCUMENT]**

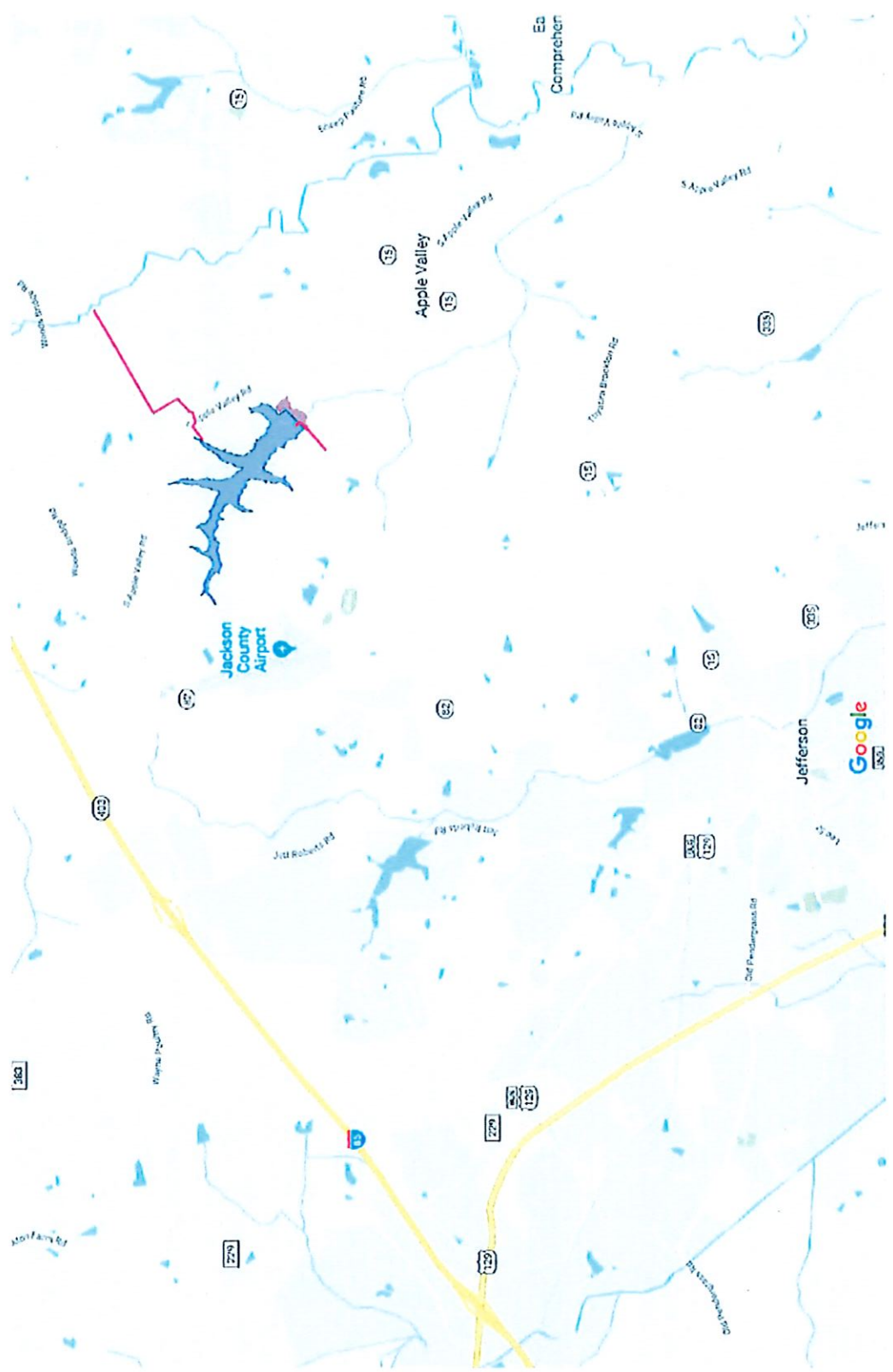
**[Remainder of This Page Left Intentionally Blank]**

**RFP #2020-10  
REQUEST FOR PROPOSALS  
FOR DESIGN SERVICES OF  
DAM; RESERVOIR AND INTAKE STRUCTURE  
City of Jefferson, Jackson County, Georgia  
Parks Creek Water Supply Program**

**EXHIBIT A**

**Proposed reservoir site  
Location Map**

Exhibit A: Location Map



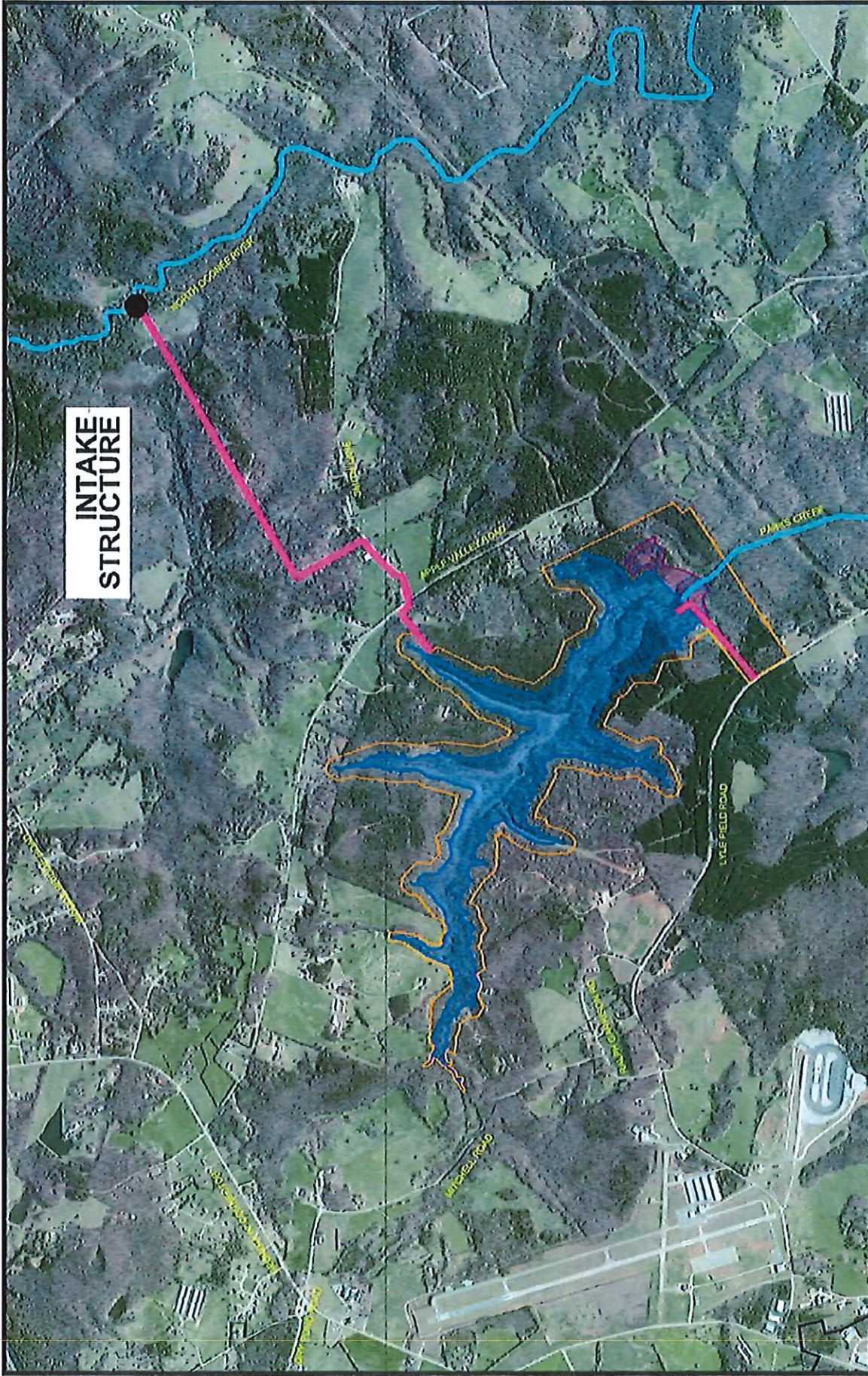


**RFP #2020-10  
REQUEST FOR PROPOSALS  
FOR DESIGN SERVICES OF  
DAM; RESERVOIR AND INTAKE STRUCTURE  
City of Jefferson, Jackson County, Georgia  
Parks Creek Water Supply Program**

**EXHIBIT B**

**Proposed raw water line route**

**EXHIBIT B**



**LEGEND**

- RESERVOIR AT 823.5'
- CITY OF JEFFERSON PROPERTY
- PROPOSED DAM STRUCTURE
- PROPOSED RAW WATERLINES
- EXISTING STREAMS

**CITY OF JEFFERSON  
PROPOSED PARKS CREEK RESERVOIR  
JANUARY 2019**



**SCALE: 1" = 2000'**

**RFP #2020-10  
REQUEST FOR PROPOSALS  
FOR DESIGN SERVICES OF  
DAM; RESERVOIR AND INTAKE STRUCTURE  
City of Jefferson, Jackson County, Georgia  
Parks Creek Water Supply Program**

**EXHIBIT C**

**US Army Corps of Engineers  
Permit Number SAS-2005-00228  
And Modifications**

## DEPARTMENT OF THE ARMY PERMIT

PERMITTEE: Honorable Roy Plott, Mayor  
City of Jefferson  
147 Athens Street  
Jefferson, Georgia 30549

PERMIT NUMBER: SAS-2005-00228

ISSUING OFFICE: Savannah District  
U.S. Army Corps of Engineers  
100 West Oglethorpe Avenue  
Savannah, Georgia 31401

NOTE: The term "you" and its derivatives used in this permit, means the permittee or any future transferee. The term "this office" refers to the appropriate District or Division office of the U.S. Army Corps of Engineers having jurisdiction over the permitted activity or the appropriate official of that office acting under the authority of the commanding officer.

You are authorized to perform work in accordance with the terms and conditions specified below.

PROJECT DESCRIPTION: To construct a 166-acre pump storage water supply reservoir on Parks Creek. Water would be pumped from the North Oconee River and stored in the reservoir. The project includes an earthen dam and water supply reservoir; a raw water intake structure and pump station on the North Oconee River; water transmission lines to convey water from the reservoir to the existing water treatment facility; and an access road for maintenance on Parks Creek Reservoir. The raw water intake is to be placed on the North Oconee River at latitude 34.1905 and longitude -83.5102, approximately 1.7 miles from the reservoir.

The construction of the earth embankment dam would involve the discharge of approximately 530,000 cubic yards of fill material into waters of the United States. The project would require the filling or inundation of approximately 0.26-acre of jurisdictional wetlands and 20,475 linear feet of streams. The normal pool elevation of the reservoir would be 823.5 feet above mean sea level (AMSL). As proposed, the project would provide a safe yield of 4.0 million gallons per day (MGD). The pipelines from the intake to the reservoir and from the reservoir to treatment plant would impact an addition 500 linear feet of stream.

The dam would be constructed with a foundation trench drain and a chimney drain. The top of the dam elevation is 832 feet AMSL, with the foundation of the dam at 740 feet AMSL. Sluice gates, stone bedding, PVC drain pipes 6 inches in diameter (perforated and non-perforated), drain fills (fine and coarse), 30 inch reinforced concrete

pipe, and steel reinforcement would make up the rest of the construction of the earth embankment dam.

The filling of the Parks Creek Reservoir would occur in three stages in accordance with Georgia Environmental Protection Division (Georgia EPD) Safe Dams Division requirements. The lower third of the normal pool of the proposed reservoir would have no Georgia EPD limits on the filling rate, if this occurs during an above-average rainfall. If there is a below-average rainfall period, it may not be possible to implement the proposed pumping from the North Oconee River. For the middle third, Georgia EPD has a two-feet-per-week rise limit. If the weekly inflow rate from a storm exceeds the combined capacity of the lake storage and the discharge pipe, then the lake level will increase more than the allowed amount and the outlet will be left fully open for an additional period of time until the pool falls to the permitted level. In the upper third, Georgia EPD has a one foot rise per week limit. If the weekly inflow rate exceeds the combined capacity of the reservoir storage and the outlet discharge, the lake level will rise faster than permitted and the outlet will be left fully open for an additional period of time until the pool level falls to the required elevation. Once at full pool, the project would provide sufficient capacity to produce a safe yield of 4 MGD.

**PROJECT LOCATION:** The project site is located at (Latitude 34.1741, Longitude -83.5291).

**PERMIT CONDITIONS:**

General Conditions.

1. The time limit for completing the work authorized by this Individual Permit ends on June 30, 2019. If you find that you need more time to complete the authorized activity, you must submit a request for your permit extension at least one month prior to the above date.

2. You must maintain the activity authorized by this permit in good condition and in conformance with the terms and conditions of this permit. You are not relieved of this requirement if you abandon the permitted activity, although you may make a good faith transfer to a third party in compliance with General Condition 4 below. Should you wish to cease to maintain the authorized activity or should you desire to abandon it without a good faith transfer, you must obtain a modification of this permit from this office, which may require restoration of the area.

3. If you discover any previously unknown historic or archeological remains while accomplishing the activity authorized by this permit, you must immediately notify this office of what you have found. We will initiate the federal and state coordination required to determine if the remains warrant a recovery effort or if the site is eligible for listing in the National Register of Historic Places.

4. If you sell the property associated with this permit, you must obtain the signature of the new owner in the space provided and forward a copy of the permit to this office to validate the transfer of this authorization.

5. If a conditioned Water Quality Certification has been issued for your project, you must comply with conditions specified in the certification as Special Conditions to this permit. For your convenience, a copy of the certification is attached if it contains such conditions.

6. You must allow representatives from this office to inspect the authorized activity at any time deemed necessary to ensure that it is being or has been accomplished in accordance with the terms and conditions of your permit.

7. The permittee understands and agrees that, if future operations by the United States require the removal, relocation, or other alteration, of the structure or work herein authorized, or if, in the opinion of the Secretary of the Army or his authorized representative, said structure or work shall cause unreasonable obstruction to the free navigation of the navigable waters, the permittee will be required, upon due notice from the Corps of Engineers, to remove, relocate, or alter the structural work or obstructions caused thereby, without expense to the United States. No claim shall be made against the United States because of any such removal or alteration.

#### Special Conditions.

1. The Permittee shall schedule an onsite preconstruction meeting between its representatives, the contractor's representatives and the appropriate Corps of Engineers Project Manager prior to undertaking any work within jurisdictional waters and wetlands to ensure that there is a mutual understanding of all terms and conditions contained within this Department of the Army permit. The Permittee shall notify the Corps of Engineers Project Manager a minimum of thirty (30) days in advance of the scheduled meeting in order to provide that individual ample opportunity to schedule and participate in the required meeting.

2. The Permittee shall maintain a copy of this permit, including approved plans, drawings, special conditions and any amendments at the work site whenever work is being performed. The Permittee shall assure that contractors, subcontractors and other personnel performing the authorized work are fully aware of the terms and conditions of this permit.

3. All work will be performed in accordance with the following attached plans and drawings which are incorporated in and made part of this permit:

a. Project vicinity map

b. Location map of the dam, reservoir, raw water intake structure, water treatment

plant and associated waterlines

- c. Conceptual plan and profile view of the dam site
- d. Conceptual cross section of the dam site
- e. Compensatory Mitigation Plan for Parks Creek Reservoir, dated June 14, 2012, as revised on July 10, 2013.
- f. Draft Long Term Management Endowment Agreement
- g. Section 401 Water Quality Certification dated December 9, 2008
- h. Permits to Withdraw, Divert, or Impound Surface Water dated December 9, 2008

4. All dredged or borrowed material used as fill in waters of the United States (U.S.) shall be from clean, uncontaminated sources and free from cultural resources; and will come from within the limits of lands purchased for construction of the Parks Creek Reservoir (Reservoir) and/or Parks Creek Reservoir Dam (Dam). For the purposes these special permit conditions, the term waters of the U.S. includes all jurisdictional streams, wetlands, open waters, ditches, swales and other conveyance located on the project site.

5. Unless specifically authorized by this permit, no construction, discharge of fill material, excavation, mechanized land clearing, tree or other vegetation removal, stockpiling of fill material or other work shall occur in waters of the U.S. This shall not prohibit the necessary clearing of vegetation within the normal pool of the proposed reservoir.

6. Prior to any land disturbing activity (including timber harvest) on the Dam construction site, the Permittee shall clearly mark all waters of the U.S. that are authorized to be impacted by the Dam (impact-waters). Acceptable forms of marking include high visibility orange construction fencing or flagging at eye level, at intervals of 25 feet or less along the entire jurisdictional boundary. Pin flags or other ground level marking is not acceptable. In addition, the Permittee shall clearly mark waters of the U.S. that are not to be impacted (no-impact-waters), if they are located within 50 feet of any construction activities. The boundaries of impact-waters and no-impact-waters shall be marked differently, to ensure that these areas are clearly identifiable to equipment operators. All no-impact-waters marking shall be maintained until the entire project has been completed.

7. Prior to any land disturbing activity (including timber harvest) within the proposed pool of the reservoir, the Permittee shall clearly mark all waters of the U.S. at the point at which they cross the normal pool elevation of the reservoir (823.5

feet above mean sea level) indicating waters that are authorized to be impacted by flooding the pool of the reservoir (impact-waters). Acceptable forms of marking include high visibility orange construction fencing or flagging at eye level, at intervals of 25 feet or less along the pool elevation within each water of the U.S. Pin flags or other ground level marking is not acceptable. In addition, the Permittee shall clearly mark waters of the U.S. that are not to be impacted (no-impact-waters), if they are located within 50 feet of any land disturbing activity (including timber harvest) within the proposed pool of the reservoir. The boundaries of impact-waters and no-impact-waters shall be marked differently, to ensure that these areas are clearly identifiable to equipment operators. All no-impact-waters marking shall be maintained until the entire project has been completed.

8. Prior to constructing any borrow pits or fill-dirt stockpile areas within 200 feet of streams, or within 50 feet of wetlands or open waters, the permittee shall submit a plan showing where the pit or stockpile area would be located and any measures that would be used to prevent potential erosion of materials at these sites into waters of the U.S. Work on these sites shall not proceed until the plans are approved by the Corps.

9. Equipment staging and maintenance areas are prohibited within 200 feet of streams, or within 50 feet of wetlands or open waters, to minimize the potential for wash water, petroleum products, or other contaminants from construction equipment entering waters of the U.S.

10. Uncured concrete, construction debris, demolition debris or other waste material shall not be discharged into streams, wetlands or open waters; or placed in areas near streams, wetlands or open waters, where migration of such materials into waters of the U.S. could be anticipated unless authorized by this permit.

11. If liquid concrete will be poured during construction of the dam or spillway, the work area shall be isolated from any nearby waterway/wetland with a sheet pile cofferdam or other measure that can prevent movement of the concrete into waters of the U.S. The area within the cofferdam should be continuously dewatered with pumps, if required, and such discharges should be piped into a containment system which will allow proper removal of particulates prior to release of the decanted water.

12. The Permittee shall ensure that drainage ditches, road-side ditches, swales and other storm-water conveyances are designed and constructed to avoid: drainage of wetlands; diversion of storm-water away from wetlands; and other hydrologic alterations of natural drainage patterns that would adversely impact wetlands.

13. All work conducted under this permit shall be located, outlined, designed, constructed and operated in accordance with the requirements of the Georgia Erosion and Sedimentation Control Act of 1975 (Georgia ESCA), as amended. Utilization of plans and specifications contained in the "Manual for Erosion and Sediment Control, (Latest Edition)," published by the Georgia Soil and Water Conservation Commission,



will aid in achieving compliance with the Georgia ESCA.

14. The Permittee shall install and maintain erosion and sediment control measures in upland areas of the project site, in accordance with the Georgia ESCA, to minimize the introduction of sediment into and the erosion of streams, wetlands and other waters of the U.S. This permit does not authorize installation of check-dams, weirs, riprap, bulkheads or other erosion control measures in streams, wetlands or other waters of the U.S outside of the area of the Dam footprint or reservoir pool. The Permittee shall obtain Corps authorization prior to installing any erosion control measures in waters of the U.S.

15. The Permittee shall install and maintain erosion and sediment control measures associated with fill material that is authorized to be discharged in streams, wetlands and other waters of the U.S., in accordance with the Georgia ESCA; and permanently stabilize fill areas at the earliest practicable date.

16. Once the project site is sufficiently stabilized through re-vegetation, the Permittee shall remove all silt fencing and other non-biodegradable erosion control measures from stream banks, riparian areas, wetlands and upland areas immediate adjacent to waters of the U.S.

17. The Permittee shall obtain and comply with all applicable Federal, state and local authorizations required for the authorized activity. A stream buffer variance may be required from the Georgia Department of Natural Resources, Environmental Protection Division (Georgia EPD), as defined in the Georgia ESCA. Information concerning variances can be obtained from Georgia EPD on their website at [www.gaepd.org](http://www.gaepd.org), or by calling (404) 463-1463.

18. If you or your contractors discover any federally listed threatened or endangered species and/or their habitat while accomplishing the activities authorized by this permit, you must immediately STOP work and notify the Corps within 24 hours. The Corps will contact the U.S. Fish and Wildlife Service or the National Marine Fisheries Service to determine if the species and/or habitat warrant further consultation.

19. Concurrent with the construction of the authorized Dam, the Permittee shall construct the associated raw water intake structure on the North Oconee River and the pumping station. The Permittee shall also concurrently construct the pipeline(s) necessary to transfer water from the raw water intake to the reservoir, and from the reservoir to the existing water treatment facility. Prior to commencement of any authorized land disturbing activities the Permittee shall submit documentation to the Corps to confirm the proposed start dates and known timelines for construction of the dam, water intake structure, and pipelines.

20. Prior to the commencement of any authorized land disturbing activities at the Dam construction site, the Permittee shall accomplish all wetland and stream

restoration and/or enhancement work at the Jefferson Recreational Park mitigation site (JRPMS), as described in the Mitigation Plan.

21. Prior to initiating work at the JRPMS, the Permittee shall submit to the Corps 60% design construction plans for review and comment. Upon receipt of the Corps' comments on the 60% design plan, the Permittee may proceed to 100% design. The Permittee shall submit 100% design plans to the Corps for final review and approval. Not until after receipt of the written approval from the Corps shall the Permittee begin work on the JRPMS.

22. The Permittee shall notify the Corps at least 10 days prior to commencement of site preparation work at the JRPMS; within 10 days of completion of site preparation work at JRPMS; and within 10 days of completing any required planting.

23. Prior to the commencement of work authorized under this permit, the boundary of the Mitigation Site shall be permanently posted with appropriate signs or marked clearly to guard against unauthorized disturbance to this area during or following construction activities.

24. In accordance with the approved Mitigation Plan, the Permittee shall submit annual reports to the Corps for five consecutive years following completion of work at the JRPMS. These reports shall be prepared in accordance with Regulatory Guidance Letter (RGL) No. 08-03, "Minimum Monitoring Requirements for Compensatory Mitigation Projects Involving the Creation, Restoration, and/or Enhancement of Aquatic Resources," dated October 10, 2008. The Permittee shall submit a hard copy and an electronic version (Word or PDF format) of these reports.

25. The Corps will coordinate the annual and final mitigation monitoring reports with the appropriate federal and state resource agencies, and inspect the Mitigation Site, as necessary. Based on information contained in the annual and final monitoring reports, comments received from the resource agencies, information obtained from site inspections, and any other relevant information, the Corps will make a final determination regarding the level of success archived at the JRPMS, and the resulting quality and quantity of aquatic functional replacement. The Permittee's compensatory mitigation requirement shall not be met until the Corps has determined that the Mitigation Plan has been successfully implemented, and the Permittee receives written confirmation of such from the Corps.

26. The Permittee shall immediately notify the Corps and propose corrective actions if at any time during site construction or the subsequent monitoring period it is determined that the JRPMS has failed to meet the success criteria of the approved Mitigation Plan. Corrective actions may include, but are not limited to: (a) additional or alternative mitigation site work and/or additional plantings, and extension of the monitoring period; (b) alternative mitigation in the form of a credit purchase from an appropriate mitigation bank, with a temporal loss credit requirement of an additional five

percent per year that the JRPMS has failed to meet Mitigation Plan objectives; (c) a combination of a and b above; or (d) other appropriate corrective measures.

27. Should the Permittee fail to successfully implement the Mitigation Plan, or if the Corps determines that the JRPMS is not fully successful; the Permittee shall provide an alternative compensatory mitigation plan necessary to replace losses in aquatic function resulting from authorized impacts to streams and wetlands.

28. Prior to any land disturbing activities occurring in waters of the U.S. at the project site the Permittee shall comply with the terms of the attached "Long Term Management Endowment Agreement," which must be executed and returned by Permittee with the signed proffered DA permit. The Permittee shall place monies in the Mountain Valley Bank (Endowment Agent) with the principal sum of \$49,694.44 after a period of 10 years. The Permittee shall provide the Corps with a copy of the statement from the Mountain Valley Bank upon each principal payment.

29. Prior to the commencement of any authorized land disturbing activities at the project site or mitigation site, the Mitigation Site shall be owned in fee by the Permittee and protected by a Declaration of Conservation Covenants and Restrictions. A draft restrictive covenant with exhibits shall be prepared by an attorney for the Permittee and forwarded to the Corps. The restrictive covenant should be drafted utilizing the latest version of the Corps' model language entitled, "Declaration of Conservation Covenants and Restrictions." The model draft language is located at [www.sas.usace.army.mil/Missions/Regulatory.aspx](http://www.sas.usace.army.mil/Missions/Regulatory.aspx). Upon written approval by the Corps, the restrictive covenant will be recorded in the land records Office of the Clerk of the Superior Court in Jackson County, Georgia. A copy of the recorded restrictive covenant, showing book and page numbers of its recorded location, shall be provided to the Corps. Upon receipt by Corps of a copy of the recorded restrictive covenant, showing book and page numbers and properly executed, the restrictive covenant requirement shall be completed. The Declaration of Conservation Covenants and Restrictions with requirements and instructions as provided on the web site shall be controlling as the long term protection language. Where another term such as "easement," "conservation easement" or "deed restriction" may be used in any provision of a permit or mitigation plan, addressing the long term protection of the property, the term "Declaration of Conservation Covenants and Restriction" shall be applied in its place to make clear that a restrictive covenant is required and that the owner of the property shall be the Permittee or owner of the property. The version of the restrictive covenant that shall apply shall be the version that is on the web site at the time the restrictive covenant is prepared and submitted to Corps. If the property is already protected by a land protection document, it will be required to be subordinated to the restrictive covenant.

30. The Permittee shall ensure that the Dam and spillway are designed and constructed to allow for the management of releases necessary to meet state water quality standards for temperature and dissolved oxygen in Parks Creek below the dam,

to the extent practicable.

31. The Permittee shall design and construct control features necessary to slow the velocity of the water exiting the Dam and thereby insure minimization of stream head-cutting in Parks Creek below the Dam. Such design features may include use of a Saint Anthony Falls (SAF) stilling basin, an impact basin, or similar structure deemed appropriate by a qualified dam engineer, to reduce effluent water velocity such that it will not erode the stream channel. In order to measure the success of the design, a pre-construction survey of the downstream channel shall be conducted and provided to the Corps. Should the permittee or the Corps find that such measures failed to stabilize the grade of the downstream channel, the Permittee shall submit a corrective action plan to the Corps for review and approval within 30 days of this determination.

32. The Permittee shall insure that the water intake on the North Oconee River is designed and constructed to minimize the occurrence of fish impingement or entrainment. The design shall include the use of drum screens with a slot opening of 0.1" or less in the outermost chamber of the intake to minimize fish entrainment. The flow velocity through the screen slots should not exceed 0.5 fps when 25% of the screen surface is clogged with debris. All water must pass through these screens before flowing in the pumping station. The screens shall be passive with no moving parts, and be fitted with an airburst backwash system to periodically dislodge debris from the screen surface.

33. Prior to the commencement of any permitted construction activity in designated floodplains and/or floodways on the project site, the Permittee shall insure that the activity complies with the applicable rules, requirements and regulations of the regulatory programs administered by the Federal Emergency Management Agency and/or the Georgia Floodplain Management Office; including revision of the National Flood Insurance Program map, if required.

34. Prior to construction of the Dam, the Permittee shall provide written confirmation to the Corps that the design of the Dam complies with applicable rules and regulations for dam safety in the State of Georgia. The permittee shall also provide a set of construction plans to the Corps prior to beginning construction and a set of as-built drawing within 90 days of completing construction.

35. The Permittee shall comply with the conditions of the attached Water Quality Certification, issued by the Georgia EPD on December 9, 2008, pursuant to Section 401 of the Clean Water Act.

36. The permittee shall comply with the conditions of the attached Permits to Withdraw, Divert or Impound Surface Water, numbers 078-0301-06 and 078-0301-07, issued by the Georgia EPD on December 9, 2008.

37. The Permittee shall construct, operate, maintain, and protect the reservoir and its watershed in accordance with Georgia Department of Natural Resources, Rules for Environmental Planning Criteria (REPC), Chapter 392-3-16. Should a condition of this permit conflict with the REPC, as now enacted or as amended in the future, the requirement of the REPC shall take precedence, unless the REPC is less protective of water quality than the applicable permit condition.

38. The Permittee shall prepare a draft "Reservoir Management Plan (RMP)," in accordance with the REPC, and submit the plan to the Georgia EPD for review and final approval. The Permittee will furnish a copy of the approved RMP to Piedmont Branch. Once the RMP is approved by the Georgia EPD, the Permittee shall finalize, implement, and ensure enforcement of and compliance with the plan.

#### FURTHER INFORMATION:

1. Congressional Authorities: You have been authorized to undertake the activity described above pursuant to Section 404 of the Clean Water Act (33 U.S.C. 1344).

2. Limits of this Authorization.

a. This permit does not obviate the need to obtain other federal, state, or local authorizations required by law.

b. This permit does not grant any property rights or exclusive privileges.

c. This permit does not authorize any injury to the property or rights of others.

d. This permit does not authorize interference with any existing or proposed federal projects.

3. Limits of Federal Liability. In issuing this permit, the Federal Government does not assume any liability for the following:

a. Damages to the permitted project or uses thereof as a result of other permitted or unpermitted activities or from natural causes.

b. Damages to the permitted project or uses thereof as a result of current or future activities undertaken by or on behalf of the United States in the public interest.

c. Damages to persons, property, or to other permitted or unpermitted activities or structures caused by the activity authorized by this permit.

d. Design or construction deficiencies associated with the permitted work.

e. Damage claims associated with any future modification, suspension, or revocation of this permit.

4. Reliance on Applicant's Data. The determination of this office that issuance of this permit is not contrary to the public interest was made in reliance on the information you provided.

5. Reevaluation of Permit Decision. This office may reevaluate its decision on this permit at any time the circumstances warrant. Circumstances that could require reevaluation include, but are not limited to, the following:

a. You fail to comply with the terms and conditions of this permit.

b. The information provided by you in support of your permit application proves to have been false, incomplete, or inaccurate (see 4 above).

c. Significant new information surfaces which this office did not consider in reaching the original public interest decision. Such a reevaluation may result in a determination that it is appropriate to use the suspension, modification, and revocation procedures contained in 33 CFR 325.7, or enforcement procedures such as those contained in 33 CFR 326.4 and 326.5. The referenced enforcement procedures provide for the issuance of an administrative order, which requires you to comply with the terms and conditions of your permit and for the initiation of legal action where appropriate.

d. You will be required to pay for any corrective measures ordered by this office, and if you fail to comply with such directive, this office may in certain situations (such as those specified in 33 CFR 209.170) accomplish the corrective measures by contract or otherwise and bill you for the cost.

6. Extensions. General Condition 1 establishes a time limit for the completion of the activity authorized by this permit. Unless there are circumstances requiring either a prompt completion of the authorized activity or a reevaluation of the public interest decision, the U.S. Army Corps of Engineers will normally consider a request for an extension of time limit.

Your signature below, as permittee, indicates that you accept and agree to comply with the terms and conditions of this permit.

\_\_\_\_\_  
(PERMITTEE)

\_\_\_\_\_  
(DATE)

This permit becomes effective when the federal official, designated to act for the Secretary of the Army, has signed below.

\_\_\_\_\_  
Issued for and in behalf of:  
Thomas J. Tickner  
Colonel, US Army  
Commanding

\_\_\_\_\_  
(DATE)

When the structures or work authorized by this permit are still in existence at the time the property is transferred, the terms and conditions of this permit will continue to be binding on the new owner(s) of the property. To validate the transfer of this permit and the associated liabilities with compliance with its terms and conditions, have the transferee sign and date below.

\_\_\_\_\_  
(TRANSFEREE)

\_\_\_\_\_  
(DATE)

Regulatory Division

CERTIFICATION OF COMPLIANCE  
WITH  
DEPARTMENT OF THE ARMY  
SAS-2005-00228

PERMIT FILE NUMBER: SAS-2005-00228

PERMITTEE ADDRESS: Mayor Roy Plott, City of Jefferson, 147 Athens Street,  
Jefferson, GA 30549

LOCATION OF WORK: The project site is located at (Latitude 34.1741, Longitude  
-83.5291)

PROJECT DESCRIPTION: The construction of the Parks Creeks water supply  
reservoir for the City of Jefferson, Jackson County, GA

ACRES AND/OR LINEAR FEET OF WATERS OF THE US IMPACTED: 0.26-acre of  
wetlands and 20,745 linear feet of stream for construction of the dam and reservoir and  
an addition 500 linear feet of stream for construction of the pipelines from the intake to  
the reservoir and from the reservoir to treatment plant.

DATE WORK IN WATERS OF US COMPLETED:

---

COMPENSATORY MITIGATION REQUIRED: Implementation of the Mitigation Plan  
dated June 14, 2012.

DATE MITIGATION COMPLETED OR PURCHASED:

Within 30 days of completion of the activity authorized by this permit, sign this  
certification and return it to the following address:

Commander  
U.S. Army Engineer District, Savannah  
Attention: Regulatory Division  
1590 Adamson Parkway, Suite 200  
Morrow, Georgia 30260-1777



Please note that your permitted activity is subject to compliance inspection by an U.S. Army Corps of Engineers' representative. If you fail to comply with the permit conditions, it may be subject to suspension, modification or revocation.

I hereby certify that the work authorized by the above referenced permit as well as any required mitigation (if applicable) has been completed in accordance with the terms and conditions of the said permit.

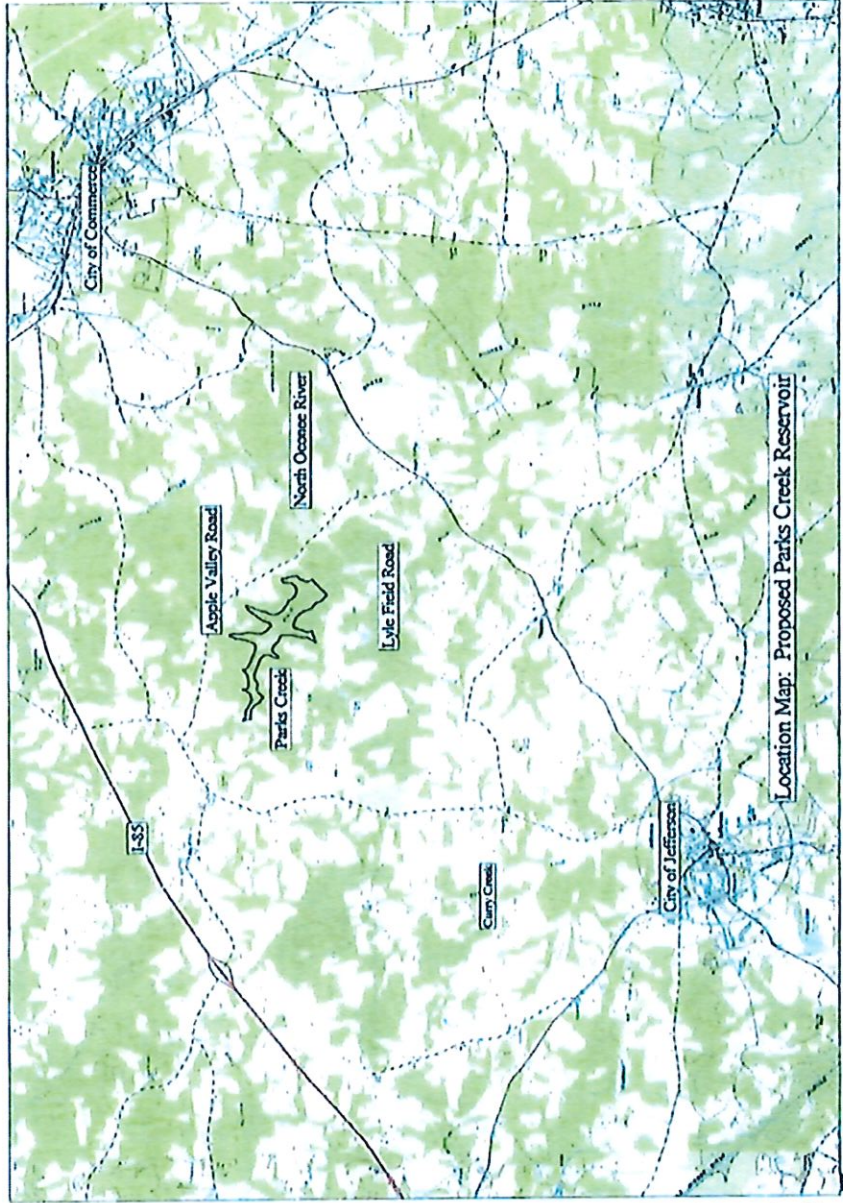
---

Signature of Permittee

---

Date

# Project Vicinity Map



200500228 ENCL 1: Location Map

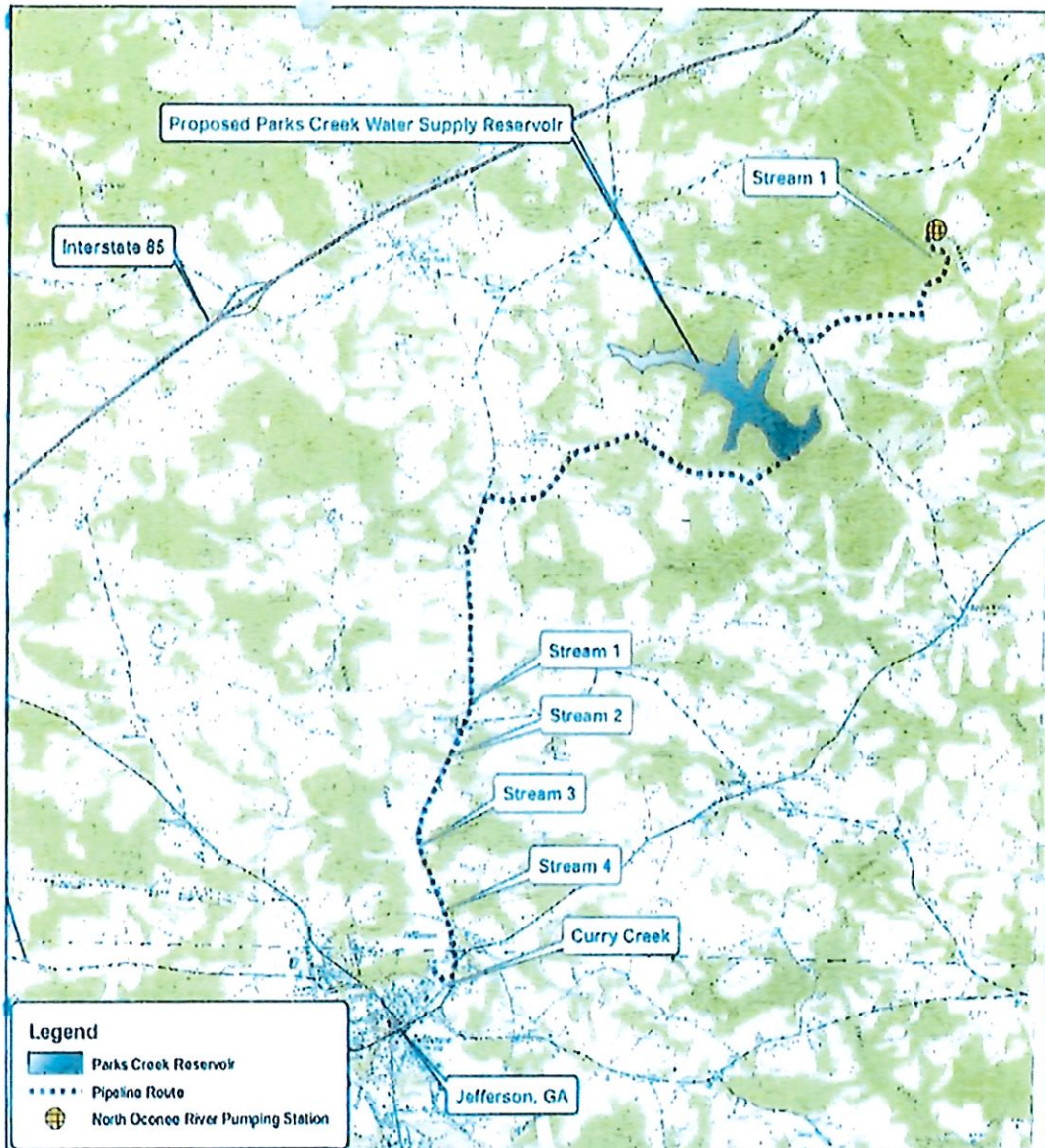
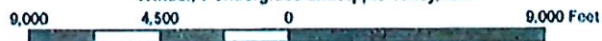
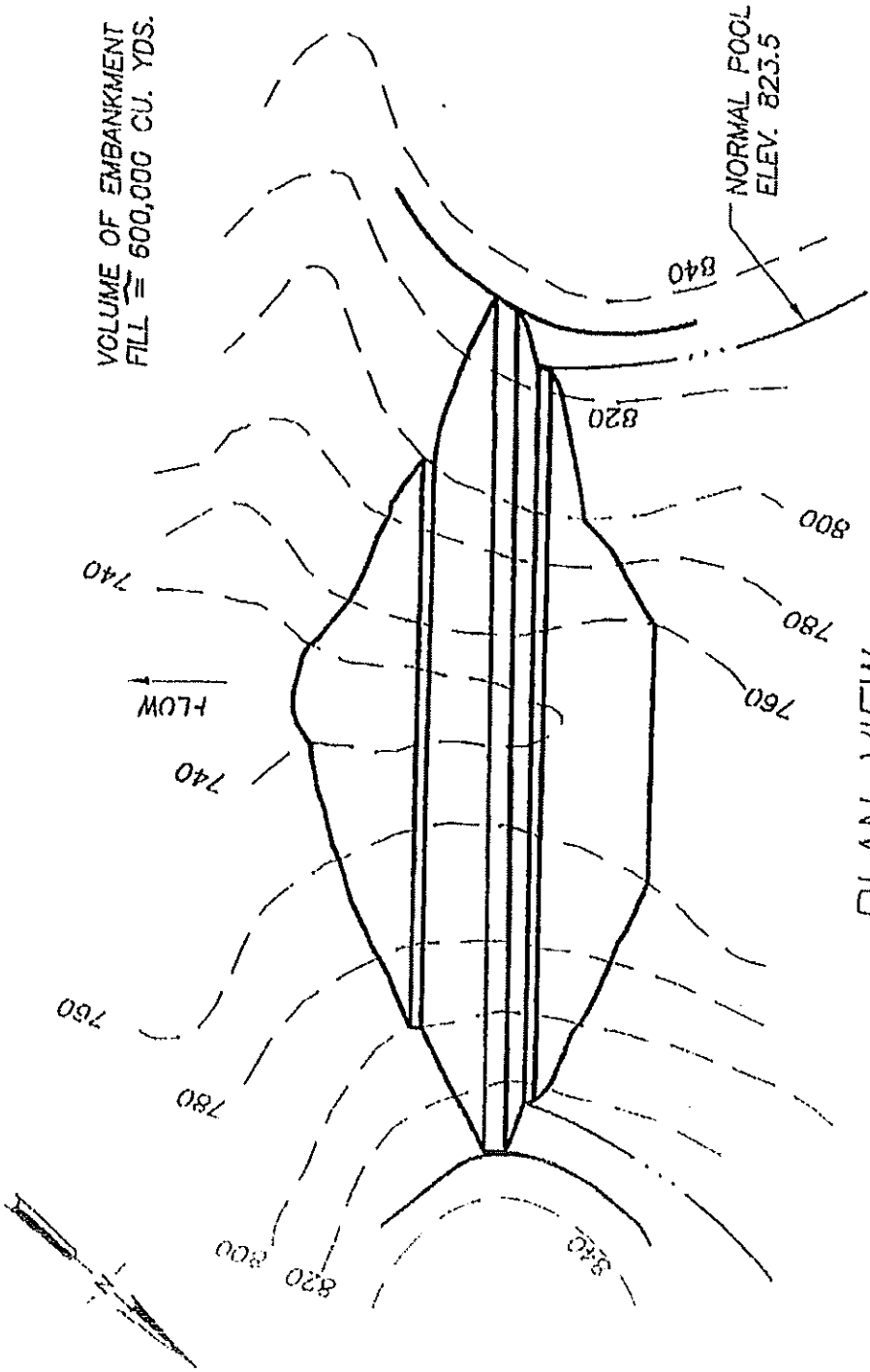


Figure 2  
 Proposed Intake and Raw Water Pipeline  
 Routing Map  
 Jackson County, Georgia

7.5-minute USGS Quadrangles: Jefferson,  
 Windor, Pendergrass and Apple Valley, GA



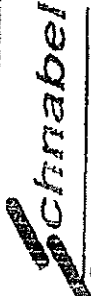


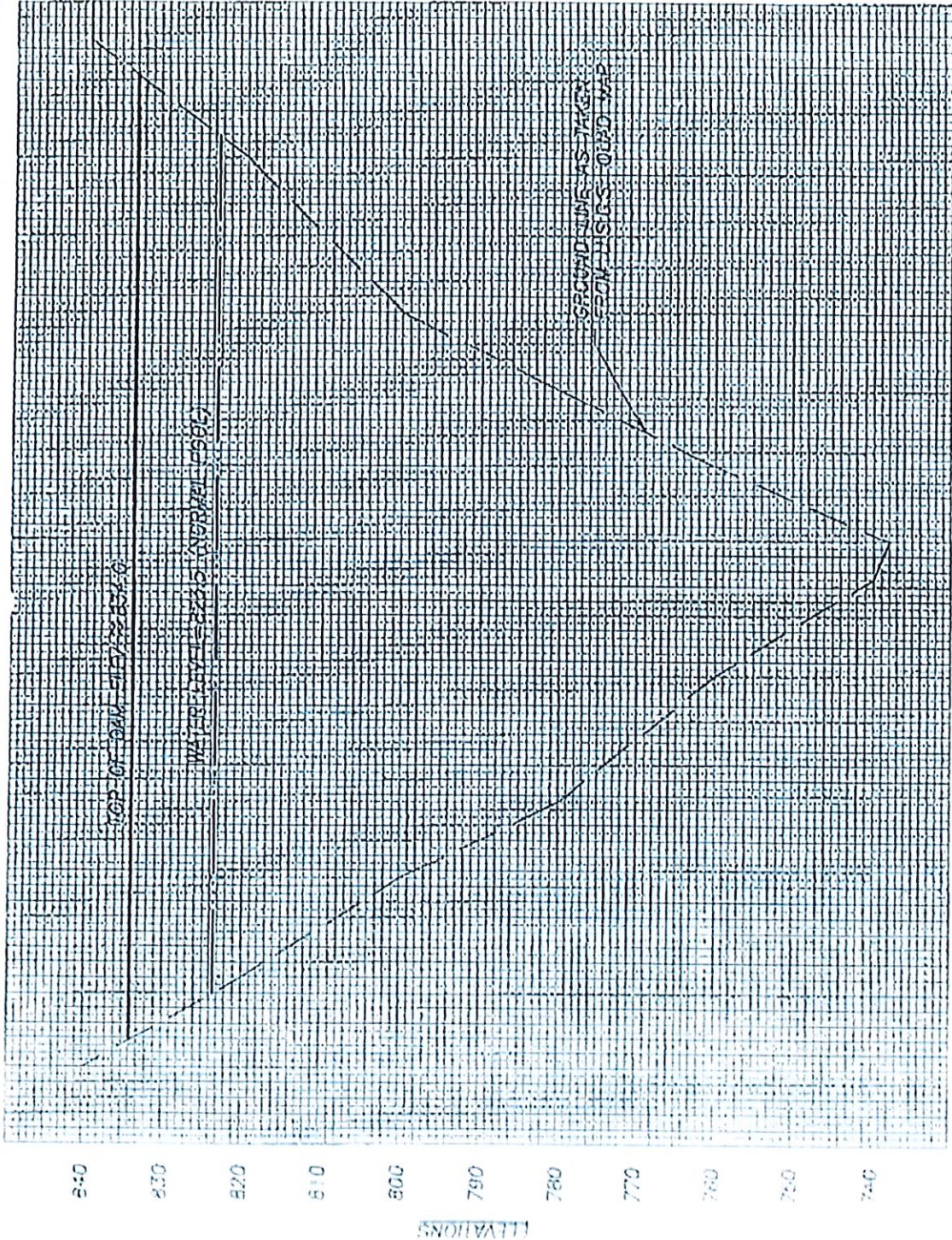
VOLUME OF EMBANKMENT  
FILL  $\approx$  600,000 CU. YDS.

NORMAL POOL  
ELEV. 823.5

PLAN VIEW

NTS

|  |  |  |   |
|--|--|--|---|
|  <p><b>chnabel</b><br/>Schnabel Engineering<br/>5075 BARKER RD. SUITE 114<br/>ANNANDALE, VA 22003<br/>TEL 703-791-8000<br/>FAX 703-791-8005</p> |  | <p>SCALE NTS</p> <p>CRAWN BY CLJ</p> <p>DESIGNED BY DMH</p> <p>DATE 05-30-05</p> | <p>FIGURE NO. 1</p> <p>CADD NO.</p> <p>PROJECT NO. 01171022.00-03</p> |
| <p>PROPOSED PARKS CREEK DAM</p> <p>JACKSON COUNTY, GEORGIA</p>   |  |  |   |



2+00 3+00 4+00 5+00 6+00 7+00 8+00 9+00 10+00 11+00 12+00 13+00 14+00 15+00 16+00 17+00

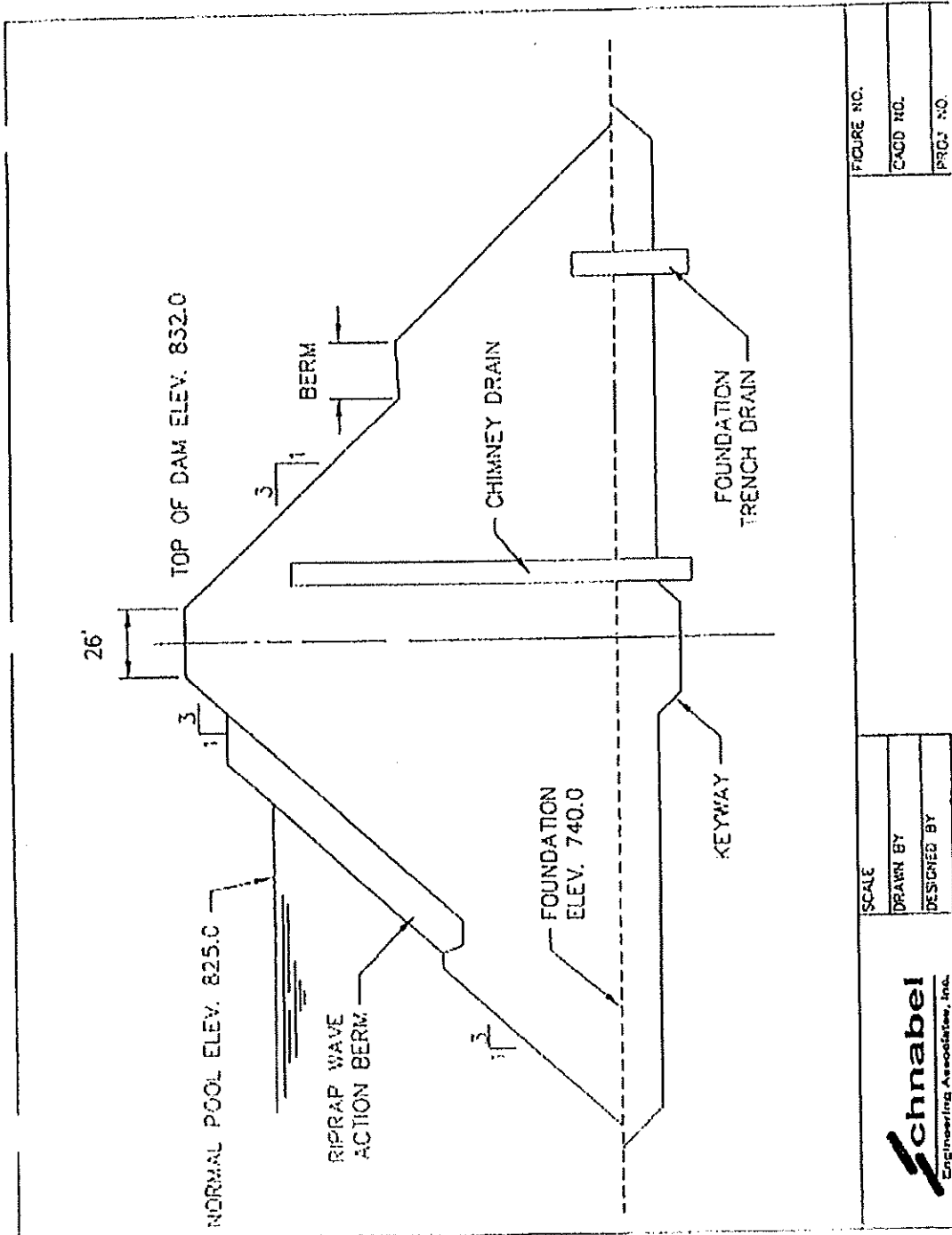
|             |                |
|-------------|----------------|
| FIGURE NO.  | 2              |
| CADD NO.    |                |
| PROJECT NO. | 01171022.00-03 |

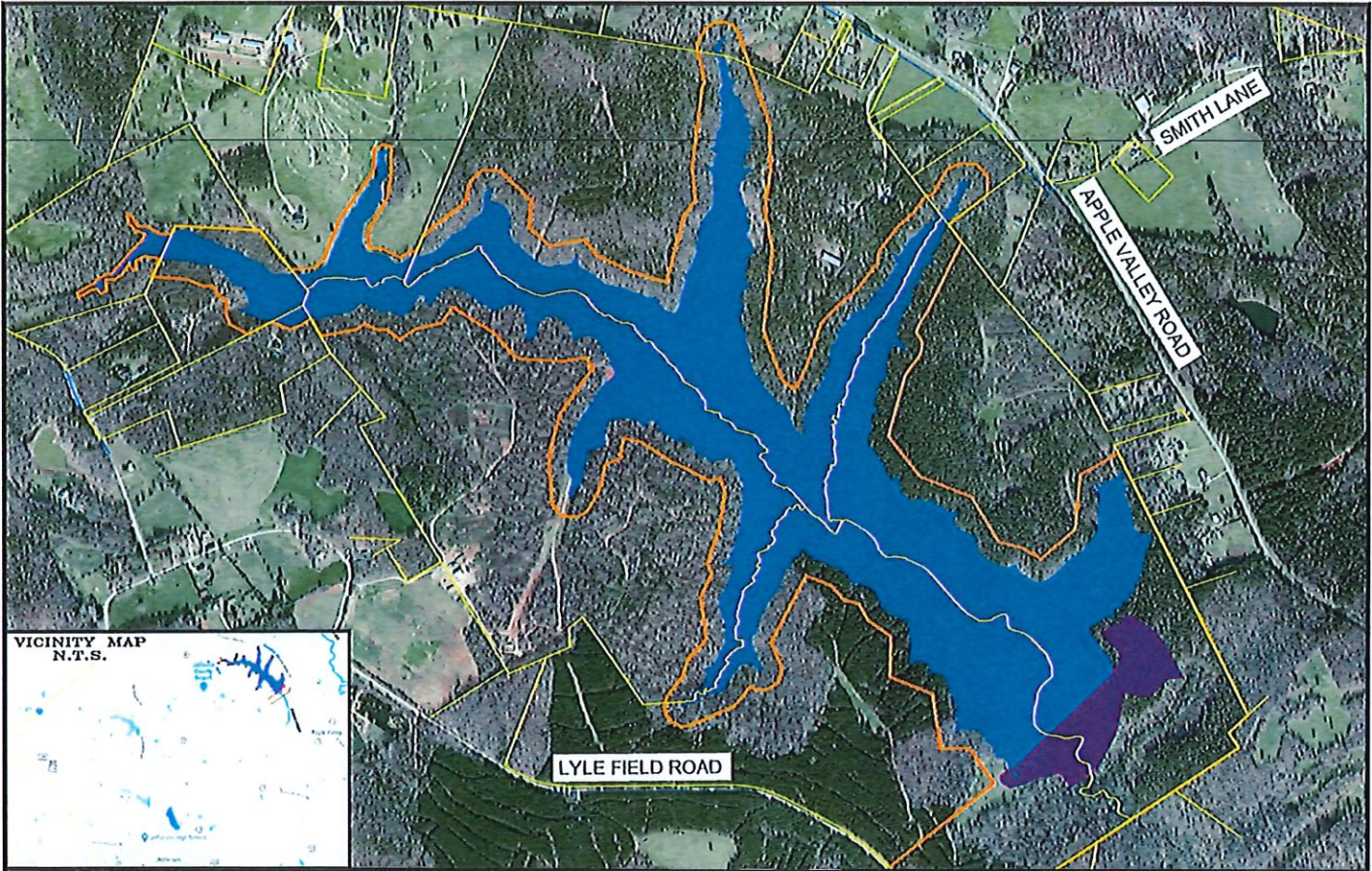
PROPOSED PARKS CREEK DAM  
 JACKSON COUNTY, GEORGIA  
 PROFILE ALONG CENTERLINE OF PARKS CREEK DAM

|                |          |
|----------------|----------|
| SCALE AS SHOWN |          |
| DRAWN BY       | CLJ      |
| DESIGNED BY    | DMM      |
| DATE           | 05-30-03 |

**Schnabel**  
 Schnabel Engineering  
205 SOUTH MAIN STREET, SUITE 104  
 JACKSON COUNTY, GEORGIA 30601  
 PHONE: 706/371-1000

# Conceptual Earthen Embankment Dam Drawing





**LEGEND**

- RESERVOIR AT 823.5'
- CITY OF JEFFERSON PROPERTY
- PROPOSED DAM STRUCTURE
- ADJACENT PARCELS AND PROPERTY LINES

**CITY OF JEFFERSON  
PROPOSED PARKS CREEK RESERVOIR  
JANUARY 2019**



**SCALE: 1" = 1000'**

PATH & FILE: Z:\PROJECTS\0101021\WaterFirst\2019\01021-PARK CREEK RESERVOIR



This notice of authorization must be conspicuously displayed at the site of work.

United States Army Corps of Engineers

6 Aug 20 14

A permit to construct a 166-acre pump storage water supply reservoir and associated intakes and pipelines

at a site located on Parks Creek in Jackson County, Georgia

has been issued to City of Jefferson on 6 Aug 20 14

Address of Permittee 147 Athens Street, Jefferson, Georgia 30549

Permit Number

SAS-2005-00228

*David M. Piller*

FOR: District Commander

THOMAS J. TICKNER  
Colonel, US Army



D. TO ISSUE THE PERMIT IN ACCORDANCE WITH THE PLANS SUBMITTED BY THE APPLICANT WITH SPECIAL CONDITIONS: This would be the appropriate course of action to follow. In order to protect the public interest the following special conditions would be placed on any permit issued:

1. Prior to beginning construction of the dam, the permittee shall implement and comply with all stipulations contained in the attached Memorandum of Agreement submitted to the Advisory Council on Historic Preservation pursuant to Title 36 Code of Federal Regulations Part 800.6(a).

2. Prior to initiating any work authorized under this permit, the permittee shall insure compliance with all applicable rules, regulations and requirements of the Federal Emergency Management Agency pertaining to construction activities in designated flood plains and/or flood ways. The permittee shall perform any necessary mapping to document changes in flood plains and/or floodways that may be affected by the permitted activity.

3. All dredged or borrowed material used as fill on this project will come from within the limits of lands purchased **or leased** for construction of the reservoir. This material will be obtained from clean, uncontaminated sources; free from cultural resources.

4. Prior to the commencement of work authorized under this permit, the applicant shall purchase 2.0 wetland mitigation credits to offset the functions and values that will be lost due to the project. Notification of credit purchase shall be provided to this office, at the letterhead address, prior to commencement of work authorized under this permit.

5. Prior to construction of the proposed dam, the permittee shall have an attorney prepare a draft Declaration of Covenants and Restrictions with exhibits utilizing the USACE Savannah District's model draft and directions. This model draft document with instructions is located on the Savannah District web site. Restrictive covenants shall be placed upon all real property referenced as compensatory mitigation by the issuance of this permit. Upon written approval of the Declaration of Covenants and Restrictions by the USACE, Savannah District Office of Counsel, the attorney for the permittee shall execute and record the document with exhibits in the Office of the Clerk of the Superior Court of the county in which the land lies. The Office of Counsel shall be furnished with a copy of the recorded Declaration of Covenants and Restrictions and the recorded surveys of record. No land disturbing activities associated with dam construction can be started prior to the Declaration of Restrictions and Covenants being filed.

6. The permittee shall completely implement the attached compensatory mitigation plan. Titled "Compensatory Mitigation Plan for the Proposed Parks Creek Reservoir" dated October 2004. The permittee shall provide the Corps of Engineers with specific work plans for the implementation of this mitigation plan prior to initiating any work. Upon notification by the Corps of acceptance of this work plan, the permittee shall proceed with implementation in accordance with the plan. All site preparation, land modifications, and stream enhancement activities associated with the stream restoration, enhancement and/or creation work described under this plan shall be accomplished prior to beginning any land disturbing activities associated

with construction of the dam.

7. The permittee shall submit a detailed plan for monitoring each of the proposed mitigation sites for our review and approval prior to the initial mitigation activities being completed. This plan shall state the factors that would be monitored, the methods to be used, and a statement of the success criteria to be used for each site.

8. The permittee shall take immediate remedial action to correct deficiencies where mitigation areas fail to meet the objectives as outlined in the attached mitigation plan.

9. The permittee shall perform maintenance on each mitigation area for five consecutive years upon completion of restoration work. Should a major deficiency be identified, remedial action shall be completed and the five-year maintenance and monitoring period shall start over, if determined necessary.

10. Upon completion of the stated objectives of the attached mitigation plan and compliance with applicable permit special conditions, the permittee shall provide sufficient information to this office for jurisdictional determinations to be made on each stream restoration and preservation area.

11. Should a jurisdictional determination of this office verify that a stream restoration or preservation area is deficient in meeting replacement acreage, as described in the attached mitigation plan; the permittee shall provide supplemental compensatory mitigation necessary to offset this deficiency.

12. All work conducted under this permit shall be located, outlined, designed, constructed and operated in accordance with the minimal requirements as contained in the Georgia Erosion and Sedimentation Control Act of 1975, as amended. Utilization of plans and specifications as contained in "Manual for Erosion and Sediment Control, latest edition" published by the Georgia Soil and Water Conservation Commission or their equivalent will aid in achieving compliance with the aforementioned minimal requirements.

13. The Permittee shall install a single continuous monitoring station on Parks Creek below the dam to record stage, pH, temperature, specific conductivity, dissolved oxygen, and turbidity.

14. The dam shall be designed and constructed so the temperature of the water released will be suitable for survival of riverine species; releases from the dam shall not cause a four-hour average temperature difference of more than 2 degrees Celsius in the River.

15. The dam shall be designed and constructed to oxygenate the water released from the dam to ensure dissolved oxygen levels below the dam do not fall below critical levels.

16. The intake on the North Oconee River shall be designed to minimize the occurrence of fish impingement or entrainment.

17. The Permittee shall monitor macroinvertebrates in Parks Creek in accordance with the State of Georgia's *Macroinvertebrate Biological Assessment of Wadeable Streams in Georgia*, March 2007. Monitoring shall be annually for the first two years after construction of the dam and every other year thereafter. At five year intervals, the USACE will evaluate the benefits of continuing the monitoring of macroinvertebrates in Parks Creek.

18. All work will be performed in accordance with the plans and drawings which are incorporated in and made part of the permit:

- a. Project vicinity map.
- b. Location map of reservoir.
- c. Conceptual plan view of dam site.
- d. Conceptual cross section of dam site.
- e. Mitigation Plan
- f. Section 106 MOA

**RFP #2019-10  
REQUEST FOR PROPOSALS  
FOR DESIGN SERVICES OF  
DAM; RESERVOIR, AND INTAKE STRUCTURE  
City of Jefferson, Jackson County, Georgia  
Parks Creek Water Supply Program**

**Permit Number SAS-2005-00228  
Modification Providing Purchased  
Stream and wetland credits in lieu of  
Performed Mitigation**



Laura W. Benz, LLC  
Attorney at Law

January 26, 2016

VIA Hand Delivery  
Mr. Adam White  
Project Manager, USACE  
1590 Adamson Parkway, Suite 200  
Morrow, GA 30260

Re: City of Jefferson, Parks Creek Reservoir  
SAS-2005-00228

Dear Mr. White,

On June 28, 2014, the City of Jefferson ("City") received a permit (SAS-2005-00228) under Section 404 of the Clean Water Act from the U.S. Army Corps of Engineers ("USACE") for the construction of a dam to impound the 166-acre Parks Creek pump-diversion Water Supply Reservoir.

On February 5, 2015 the City of Jefferson satisfied Special Condition 1 and met with the USACE to discuss the permit conditions and assure a mutual understanding of the terms and conditions contained therein. At that time, the USACE recommended the City consider modifying its Permit to use commercial bank credits to satisfy its compensatory mitigation requirements in lieu of the permitted site. Upon further consideration of this recommendation, the City proposes to modify the Permit and purchase USACE approved compensatory mitigation credits to satisfy its compensatory mitigation obligation.

Under the Savannah District Standard Operating Procedure ("SOP") the Parks Creek Project must provide 94,725 stream and 2.5 wetland credits to adequately compensate for unavoidable impacts. As set forth under the Savannah District Mitigation Banking Selection Guidelines, the City assessed the available credits within the basin, as shown in the attached mitigation banking selection matrix (Exhibit A), and proposes to provide the necessary mitigation credits as follows: 75,560 stream credits from Greensboro Mitigation Bank (SAS-2007-00089), 19,165 stream credits from Gum Log Mitigation Bank (SAS-2004-07010) and 2.5 wetland credits from Little Sandy Creek Mitigation Bank (SAS-2005-02062).

By substituting the use of the approved permittee-responsible mitigation sites, the City respectfully requests that Special Condition 20 be revised to provide:

"Prior to the commencement of any authorized land disturbing activity at the Dam construction site, the Permittee shall purchase 94,725 stream credits and 2.5 wetland credits from USACE approved banks in accordance with the Savannah District Mitigation Banking Selection Guidelines." By purchasing credits from USACE approved banks, Special Conditions 21-29 are no longer applicable and therefore should be removed from the Permit.

Upon review of the proposed bank purchase matrix and enclosed information, please do not hesitate to contact me at (678) 778-2448 if you have further questions. I look forward to working with you to expeditiously complete the requested modification.

Sincerely,



Laura W. Benz

Enclosure

cc: Mr. Roy Plott, Mayor  
Mr. Jeff Killip, Director  
Mr. Jerry Hood, EMI  
Mr. Justin Hammonds, USACE Mitigation Liaison  
Mr. Kevin Thames, USACE

## Proposed Mitigation Bank Credit Purchase

**Case Facts:** As authorized in an Individual Permit (IP) and in accordance with the Savannah District's Mitigation Standard Operating Procedures (SOP), the project **SAS-2005-00228** would need to obtain 2.5 wetland credits and 94,725 stream credits. This project is located in the Oconee Primary Service Area (PSA) and in the 03070101 8-digit Hydrologic Unit Code (HUC). Additional information and analyses of the Primary and Secondary Service Areas are provided in the following matrix:

| <b>RESOURCE ANALYSIS</b> |                          |                |                       |
|--------------------------|--------------------------|----------------|-----------------------|
| Resource Category        | Primary Service Area HUC | Credits Needed | USACE PERMIT #        |
| Wetland                  | 3070101                  | 2.5            | <b>SAS-2005-00228</b> |
| Stream                   | 3070101                  | 94,725         |                       |

| <b>PRIMARY SERVICE AREA MITIGATION BANK INFO: OCONEE</b> |             |              |                                      |                                     |                              |                      |
|--|-------------|--------------|--------------------------------------|-------------------------------------|------------------------------|----------------------|
| Bank Name  | Bank Permit | Primary HUCs | Sufficient Wetland Credits Available | Sufficient Stream Credits Available | Distance from Impact (miles) | Recommended for Use  |
| Chicopee Woods   | 200600796   | 3070101      | 0                                    | 3,590.46                            | 17.79                        | NO                   |
| Goat Farm*   | 200471378   | 3070101      | 0 (8.83)                             | 11,848.90                           | 20.34                        | No - See explanation |
| Gum Log  | 200407010   | 3070101      | 0                                    | 19,165.35                           | 6.85                         | YES                  |
| Greensboro   | 200700089   | 3070101      | 0                                    | 75,560                              | 41.04                        | YES                  |
| Middle Oconee  | 200405300   | 3070101      | 0                                    | 13,422.40                           | 7.06                         | NO                   |
| Mulberry River   | 990012810   | 3070101      | 0                                    | 771.20                              | 10.65                        | NO                   |
| Rose Creek   | 200600407   | 3070101      | 0                                    | 6,655.40                            | 33.57                        | NO                   |

| <b>SECONDARY SERVICE AREA MITIGATION BANK INFO: OCMULGEE</b> |             |              |                                      |                                     |                              |                     |
|--|-------------|--------------|--------------------------------------|-------------------------------------|------------------------------|---------------------|
| Bank Name  | Bank Permit | Primary HUCs | Sufficient Wetland Credits Available | Sufficient Stream Credits Available | Distance from Impact (miles) | Recommended for Use |
| Little Sandy Creek 1   | 200502062   | 3070103      | 9.24                                 | 11,024.75                           | 70.24                        | YES                 |
| Little River   | 200600820   | 3070103      | 0                                    | 19,438.10                           | 58.46                        | NO                  |
| Snapfinger** Creek   | 200700740   | 3070103      | 5.26                                 | 31,763.20                           | 51.36                        | NO                  |

\*Goat Farm has not filed its legal protections on the property or begun construction and therefore has no available credits per the bank sponsor

\*\*Contacted bank agent repeatedly via email and telephone on November 13, 2015 and received no response. Followed up on numerous occasions and received notification that the bank contact will not sell wetland credits independently of stream credits.

## Proposed Mitigation Bank Credit Purchase

**Note:** Impacts that are within the thresholds of a Nationwide Permit (NWP) may use any mitigation bank for the replacement of credits, providing the resource functional replacements are the same and the bank is located within the same PSA as the proposed impacts. If there are no available credits in the PSA, the applicant may use credits from the Secondary Service Area (SSA)

**Applicant Recommendations:** The Applicant proposes to purchase all 94,725 stream credits from the primary service and the 2.5 wetland credits from the secondary service area as outlined below.

**Stream:** The Permittee proposes to purchase 19,165 stream credits from Gum Log mitigation bank and 75,560 stream credits from Greensboro mitigation bank. Gum Log mitigation bank is located adjacent to the previously proposed and permitted Permittee-responsible mitigation site, is the closest in proximity to the impact site and the proposed purchase will comprise all available credits from the bank. The Permittee proposes to purchase the balance of stream credits from the Greensboro mitigation bank, the only mitigation bank with sufficient available credits to meet the remainder credit requirement. Greensboro mitigation bank was submitted to the USACE prior to November 18, 2009 (the effective date for the "Savannah District, USACE, Regulatory Guidelines to Evaluate Proposed Mitigation Bank Credit Purchases in the State of Georgia") and as such, shall be evaluated for availability and appropriateness while considering the following exceptions as outlined in the above-mentioned guidance:

1. Where primary service areas have been established in the BI that differ from the boundaries posted at: <http://www.sas.usace.army.mil/MBSA.htm>, the boundaries presented in the BI shall be used for the analysis of that bank.
2. Where a Primary Service Area (PSA) contains more than one digit 8-digit HUC, the 8-digit HUC analysis discussed later in this document does not apply to a bank that was submitted prior to the effective date of this document.
3. If the bank is included within the PSA of the impact area and the bank has appropriate credits available, credits may be purchased from the "grandfathered" bank to offset the permitted impacts.
4. Where aquatic resources are generally classified as a stream or wetland resource category, that category may be considered appropriate in the analysis for compensation of such resources, respectively.

**Wetland:** The Permittee proposes to purchase its required 2.5 wetland credits from Sandy Creek I, located within the secondary service area. As noted above, there are no available wetland credits within the primary service. While the Snapfinger mitigation bank has sufficient credits and is slightly closer to the impact site, the owner will only sell wetland credits along with stream credits. Since this project is located in HUC 3070101 the primary service area must be exhausted before moving to the secondary service area and as discussed above, there are sufficient stream credits available within the primary service area thus prohibiting the Permittee to satisfy the banker's requirement for a joint purchase. The next available bank within the secondary service area is Little Sandy Creek 1 as proposed by the Permittee for purchase.



**Little Sandy Creek, LLC**  
**TCP II Holdings, LLC**  
3715 Northside Parkway  
BLDG 200, STE 500  
Atlanta, GA 30327

March 4, 2016

City of Jefferson  
147 Athens Street  
Jefferson, Georgia 30549

**Subject:** Confirmation and Transfer of Compensatory Wetland Mitigation Credits for SAS-2005-00228, Parks Creek Reservoir Project, Jackson County, Georgia

Mayor Roy Plott:

Little Sandy Creek 1 Mitigation Bank (LSC1) is in receipt of full payment for 2.5 wetland mitigation credits for SAS-2005-00228 (Parks Creek Reservoir Project) located in Jackson County, Georgia. The project is located in Hydrologic Unit Code (HUC) 03070101.

This credit transfer letter certifies your credit purchase of 2.5 wetland mitigation credits from the Little Sandy Creek 1 Mitigation Bank for SAS-2005-00228. LSC1 operates under USACE Permit No.: SAS-2005-02062.

We appreciate the opportunity to assist you with your compensatory mitigation requirements. Please call me at 770-682-9731 if you have any questions or need any additional information.

Sincerely,



Gregory P. Smith  
For Little Sandy Creek, LLC and TCP II Holdings, LLC

c: Laura Benz, Laura W. Benz, LLC via email

**Little Sandy Creek, LLC  
TCP II Holdings, LLC**  
3715 Northside Parkway  
BLDG 200, STE 500  
Atlanta, GA 30327

March 4, 2016

U.S. Army Corps of Engineers, Savannah  
Regulatory Branch, Southern Section  
Attention: Mr. Mitch Franklin  
100 West Oglethorpe Avenue  
Savannah, Georgia 31401

RE: Little Sandy Creek 1 Mitigation Bank Credit Sales Statement

Dear Mr. Franklin:

In accordance with the U.S. Army Corps of Engineers (USACE) Savannah District's instructions for reporting credit sales, we are providing the following information:

|                               |                                      |
|-------------------------------|--------------------------------------|
| Mitigation Bank               | Little Sandy Creek 1 Mitigation Bank |
| Mitigation Bank Permit Number | SAS-2005-02062                       |
| Date of Credit Sale           | 3/4/2016                             |
| USACE Permit#                 | SAS-2005-00228                       |
| Permittee Name                | City of Jefferson                    |
| County                        | Jackson                              |
| Watershed/HUC                 | 03070101                             |
| Credit Type Sold              | Wetland                              |
| Number Credits Sold           | 2.5                                  |
| Appropriate Service Area Used | Secondary                            |

A copy of the updated credit sales ledger is attached. Please feel free to contact me at 770-682-9731 if you have any questions or need any additional information.

Sincerely,



Gregory P. Smith  
For Little Sandy Creek, LLC and TCP II Holdings, LLC

Attachment

**Greensboro MB, LLC**  
6425 Powers Ferry Road, Suite 120  
Atlanta, Georgia 30339

March 4, 2016

City of Jefferson  
147 Athens Street  
Jefferson, Georgia 30549

Subject: Confirmation and Transfer of Compensatory Stream Mitigation Credits for  
USACE Permit Number SAS-2005-00228, Parks Creek Reservoir  
Project, Jackson County, Georgia

Mayor Roy Plott:

Greensboro Mitigation Bank (GMB) is in receipt of full payment for 75,560 stream mitigation credits for USACE Permit No.: SAS-2005-00228 (Parks Creek Reservoir Project) located in Jackson County, Georgia. The project is located in Hydrologic Unit Code (HUC) 03070101.

This credit transfer letter certifies your credit purchase of 75,560 stream mitigation credits from the Greensboro Mitigation Bank for USACE Permit No.: SAS-2005-00228. GLMB operates under USACE Permit No.: SAS-2007-00089.

We appreciate the opportunity to assist you with your compensatory mitigation requirements. Please call me at 770-682-9731 if you have any questions or need any additional information.

Sincerely,



Gregory P. Smith  
For Greensboro MB, LLC

c: Laura Benz, Laura W. Benz, LLC via email

**Gum Log, LLC**  
P.O. Box 35  
Jefferson, Georgia 30549

March 4, 2016

U.S. Army Corps of Engineers, Savannah  
Regulatory Branch, Southern Section  
Attention: Mr. Mitch Franklin  
100 West Oglethorpe Avenue  
Savannah, Georgia 31401

RE: Gum Log Mitigation Bank Credit Sales Statement

Dear Mr. Franklin:

In accordance with the U.S. Army Corps of Engineers (USACE) Savannah District's instructions for reporting credit sales, we are providing the following information:

|                               |                         |
|-------------------------------|-------------------------|
| Mitigation Bank               | Gum Log Mitigation Bank |
| Mitigation Bank Permit Number | SAS-2004-07010          |
| Date of Credit Sale           | 3/4/2016                |
| USACE Permit/File Number      | SAS-2005-00228          |
| Permittee Name                | City of Jefferson       |
| County                        | Jackson                 |
| Watershed/HUC                 | 03070101                |
| Credit Type Sold              | Stream                  |
| Number Credits Sold           | 19,165                  |
| Appropriate Service Area Used | Primary                 |

A copy of the updated credit sales ledger is attached. Please feel free to contact me at 770-682-9731 if you have any questions or need any additional information.

Sincerely,



Gregory P. Smith  
For Gum Log, LLC

Attachment

**Gum Log, LLC**  
P.O. Box 35  
Jefferson, Georgia 30549

March 4, 2016

City of Jefferson  
147 Athens Street  
Jefferson, Georgia 30549

**Subject:** Confirmation and Transfer of Compensatory Stream Mitigation Credits for  
USACE Permit Number SAS-2005-00228, Parks Creek Reservoir  
Project, Jackson County, Georgia

Mayor Roy Plott:

Gum Log Mitigation Bank (GLMB) is in receipt of full payment for 19,165 stream mitigation credits for USACE Permit No.: SAS-2005-00228 (Parks Creek Reservoir Project) located in Jackson County, Georgia. The project is located in Hydrologic Unit Code (HUC) 03070101.

This credit transfer letter certifies your credit purchase of 19,165 stream mitigation credits from the Gum Log Mitigation Bank for USACE Permit No.: SAS-2005-00228. GLMB operates under USACE Permit No.: SAS-2004-07010.

We appreciate the opportunity to assist you with your compensatory mitigation requirements. Please call me at 770-682-9731 if you have any questions or need any additional information.

Sincerely,



Gregory P. Smith  
For Gum Log, LLC

c: Laura Benz, Laura W. Benz, LLC via email

**Greensboro MB, LLC**  
6425 Powers Ferry Road, Suite 120  
Atlanta, Georgia 30339

March 4, 2016

U.S. Army Corps of Engineers, Savannah  
Regulatory Branch, Southern Section  
Attention: Mr. Mitch Franklin  
100 West Oglethorpe Avenue  
Savannah, Georgia 31401

RE: Greensboro Mitigation Bank Credit Sales Statement

Dear Mr. Franklin:

In accordance with the U.S. Army Corps of Engineers (USACE) Savannah District's instructions for reporting credit sales, we are providing the following information:

|                               |                            |
|-------------------------------|----------------------------|
| Mitigation Bank               | Greensboro Mitigation Bank |
| Mitigation Bank Permit Number | SAS-2007-00089             |
| Date of Credit Sale           | 3/4/2016                   |
| USACE Permit/File Number      | SAS-2005-00228             |
| Permittee Name                | City of Jefferson          |
| County                        | Jackson                    |
| Watershed/HUC                 | 03070101                   |
| Credit Type Sold              | Stream                     |
| Number Credits Sold           | 75,560                     |
| Appropriate Service Area Used | Primary                    |

A copy of the updated credit sales ledger is attached. Please feel free to contact me at 770-682-9731 if you have any questions or need any additional information.

Sincerely,



Gregory P. Smith  
For Greensboro MB, LLC

Attachment

**RFP #2019-10  
REQUEST FOR PROPOSALS  
FOR DESIGN SERVICES OF  
DAM; RESERVOIR, AND INTAKE STRUCTURE  
City of Jefferson, Jackson County, Georgia  
Parks Creek Water Supply Program**

**Permit Number SAS-2005-00228  
Modification Extending Project Development Period to  
June 30, 2024**



DEPARTMENT OF THE ARMY  
SAVANNAH DISTRICT, CORPS OF ENGINEERS  
1590 ADAMSON PARKWAY, SUITE 200  
MORROW, GEORGIA 30260-1777

April 10, 2019

Regulatory Branch  
SAS-2005-00228

Honorable Steve Quinn, Mayor  
City of Jefferson  
147 Athens Street  
Jefferson, Georgia 30549

Dear Mayor Quinn:

We refer to your letter, dated February 15, 2019, requesting modification of Department of the Army permit number SAS-2005-00228. This request was submitted on your behalf by Benz Law Group, LLC. The original permit, issued to the City of Jefferson on August 6, 2014, and expiring on June 30, 2019, authorized all activities associated with the construction of a 166-acre pump storage water supply reservoir on Parks Creek, with a raw water intake to be placed on the North Oconee River, approximately 1.7 miles from the reservoir, in Jackson County, Georgia.

Subsequent to issuance of the original permit, our office proffered a permit modification, involving a revision to the approved compensatory mitigation plan, on February 12, 2016, and executed by the City of Jefferson (City) on February 29, 2016. Our records indicate that all required compensatory mitigation credits as stipulated under the authorized permit modification were purchased on March 4, 2016. We understand that the City, due to previously unanticipated delays in the project's funding schedule, is presently requesting a time extension to the permit, to accommodate construction of the project as currently authorized.

In accordance with your request, and as a result of our review of the case-specific circumstances indicated, we are hereby authorizing the following modification to Department of the Army permit number SAS-2005-00228:

**AUTHORIZED MODIFICATION:** The completion date for work authorized under Department of the Army permit number SAS-2005-00228, is extended from June 30, 2019 to June 30, 2024.

This permit modification is subject to the remaining terms and conditions of the original permit and the subsequent permit modification. You will not depart from the approved location or plans without obtaining prior approval from the Department of the Army.



This authorization does not convey any property rights, either in real estate or material, or any exclusive privileges. It does not authorize any injury to property, invasion of rights, or any infringement of federal, state, local laws, or regulations; nor does it obviate the requirement to obtain State or local assent required by law for the activity described herein. It does not affect your liability for any damages that may be caused by the work.

**If this permit modification is agreeable to you, sign and provide our office with a copy of the executed document (electronic signature is acceptable). Please retain the original for your records. Please be advised that this permit modification is valid only if the signed document is received in our office within 60 days from the date of this letter. If we do not receive the signed document from you within the 60-day timeframe, this permit modification will automatically expire.**

If you object to this decision due to certain terms and conditions therein, you may request that the permit be modified under our regulations at Title 33 Code of Federal Regulations (33 CFR) Part 331. Enclosed you will find a Notification of Appeal Process (NAP) Fact Sheet and Request for Appeal (RFA) Form. To request that the permit be modified you must complete Section II of the enclosed form and return the form to the District Engineer at the address shown above.

In order for an RFA to be accepted, the U.S. Army Corps of Engineers must determine that it is complete, that it meets the criteria for appeal under 33 CFR Part 331.5, and that it has been received by the District Engineer within 60 days of the date of the NAP. Should you decide to submit an RFA form, it must be received at the above address by this deadline.

It is not necessary to submit an RFA form to the District Office if you do not object to the permit decision.

A copy of this letter is being provided to the following party: Ms. Laura W. Benz, Benz Law Group, LLC, 19 West Broad Street, Newnan, Georgia 30263.

Thank you in advance for completing our on-line Customer Survey Form located at [http://corpsmapu.usace.army.mil/cm\\_apex/f?p=regulatory\\_survey](http://corpsmapu.usace.army.mil/cm_apex/f?p=regulatory_survey). We value your comments and appreciate your taking the time to complete a survey each time you have interaction with our office.

If you have any questions, please contact Adam White, Project Manager, Piedmont Section, at 678-422-2730 or [adam.f.white@usace.army.mil](mailto:adam.f.white@usace.army.mil).

JOHNSON.EDW  
ARD.B.JR.12306  
15884

Digitally signed by  
JOHNSON.EDWARD.B.JR.1230615884  
DN: c=US, o=U.S. Government,  
ou=DoD, ou=FPO, ou=USA,  
cn=JOHNSON.EDWARD.B.JR.1230615884  
E1  
Date: 2019.04.10 15:25:59 -0400

For Daniel H. Hibner, PMP  
Colonel, U.S. Army  
Commanding

Enclosure

**RFP #2020-10  
REQUEST FOR PROPOSALS  
FOR DESIGN SERVICES OF  
DAM; RESERVOIR AND INTAKE STRUCTURE  
City of Jefferson, Jackson County, Georgia  
Parks Creek Water Supply Program**

**EXHIBIT D**

**Georgia Environmental Protection Division  
Surface Water Withdrawal Permit Nos.  
078-0301-06 - North Oconee River  
And  
078-0301-07 - Parks Creek Reservoir**

**Note:**

**The City of Jefferson has submitted withdrawal permit renewal requests to the Georgia EPD,  
including all ancillary documents.**

y of  
erson

DEC 15 2008

City Manager's  
Office

Georgia Department of Natural Resources

Environmental Protection Division, Watershed Protection Branch  
4220 International Parkway, Suite 101, Atlanta, Georgia 30354

Linda MacGregor, Branch Chief  
404/675-6236

FAX: 404/675-6244

December 12, 2008

Honorable Jim Joiner, Mayor  
City of Jefferson  
City Hall, 147 Athens Street  
Jefferson, Georgia 30549

RE: Surface Water Withdrawal Permits Nos. 078-0301-06 (New) & 078-0301-07 (New)

Dear Mr. Joiner:

In accordance with the Georgia Water Quality Control Act, as amended, two new Permits to Withdraw Surface Water have been issued by the Division and are hereby enclosed. Specific conditions of compliance are provided on pages 1 and 2 of the Permits. In addition to Standard Condition number (4), the City of Jefferson must submit to the Division within the first 15 days of the calendar month, a monthly Surface Water Withdrawal Report for the previous month, showing daily raw water withdrawals associated with these Permits. A copy of this reporting form is included.

Exceeding the maximum 24-hour or monthly average withdrawal limitations is a Permit violation and must be reported to the Watershed Protection Branch by telephone (404/675-6236) within 48 hours, and confirmed in writing within 10 days. Failure to comply with any of the provisions of the Permits may make the permittee liable for civil penalties as provided by the Act.

If you have any questions, please do not hesitate to write or contact me at the phone number above.

Sincerely,



Ade Oké, Coordinator  
M & I Surface Water Unit

City of  
Jefferson

DEC 15 2008

City Manager's  
Office

## Georgia Department of Natural Resources

2 Martin Luther King, Jr. Drive, SE, Suite 1058 East, Atlanta, Georgia 30334  
Noel Holcomb, Commissioner  
Carol A. Couch, Ph. D.  
Environmental Protection Division  
404/656-3094

December 9, 2008

Honorable Jim Joiner, Mayor  
City of Jefferson  
City Hall, 147 Athens Street  
Jefferson, Georgia 30549

Re: Georgia 401 Water Quality Certification  
USACE Public Notice No. 200500228  
Parks Creek Reservoir (Jackson County) / Oconee River Basin

Dear Mayor Joiner:

This concerns the City of Jefferson's (City) application for a Federal Permit (404) to conduct activity in, on or adjacent to waters of the State of Georgia. The proposed activity is the construction of a dam on Parks Creek about 1.5 miles upstream of Ga. Hwy. 15, creating a 171-acre reservoir having a safe dependable yield (average annual yield) of 3.8 MGD. The reservoir, a pump-storage reservoir filled from the North Oconee River, will supply water for the City's service area.

Pursuant to Section 401 of the Federal Clean Water Act, the State of Georgia issues this Water Quality Certification to the City for this proposed activity.

This certification follows the Environmental Protection Division's (EPD) review of required documentation submitted with the 404 application, the water withdrawal applications, and comments on the proposed activity by Georgia's Wildlife Resources Division, the U. S. Environmental Protection Agency (USEPA), the U. S. Fish & Wildlife Service (USFWS), the U. S. Army Corps of Engineers (USACE) and other agencies and organizations. This review has led EPD to conclude:

1. That the City's proposed service area and assessment of long term need for that area is appropriate. That the applicant needs the amount of water the reservoir would provide to meet long term (2050) demands even with projected demand reductions via future opportunities with water conservation, wastewater re-use, and groundwater supply contributions.
2. That the City's alternatives analysis was comprehensive and that the preferred alternative is acceptable to BPD. The initial group of water supply alternatives was narrowed to three with Parks Creek Reservoir, having the least environmental impact, selected by the City as the preferred alternative.
3. That there are reasonable assurances that the activity will comply with state water quality standards to protect designated uses, meet criteria, and comply with anti-degradation policy.

The State of Georgia certifies that there is no applicable provision of Section 301, no limitation under Section 302, no standard under Section 306, and no standard under Section 307 for the applicant's activity. The State of Georgia certifies that the applicant's activity will comply with all applicable provisions of Section 303.

This certification is contingent upon the City's compliance with its Permits to Withdraw, Divert or Impound Surface Water Nos. 078-0301-06 (New) and 078-0301-07 (New). Moreover, the City must comply with the NPDES General Permit GAR100001.

Honorable Jim Joiner  
December 9, 2008  
Page Two

This certification does not relieve the City of any obligation or responsibility for providing acceptable mitigation for unavoidable impacts to waters of the State or for complying with the provisions of any other federal, state, or local laws or regulations.

The City is responsible for submitting this certification to the appropriate federal agency.

I appreciate the work that the City has done to date regarding this important project and look forward to continued dialogue with the City in the future as it strives to meet the growing demands in the area and, at the same time, protect the quality of Georgia's water resources. Please contact Mr. Clay Burdette at (404) 675-1662 with any questions regarding this certification.

Sincerely  


Carol A. Couch  
Director

cc: Ms. Sandra Tucker  
Mr. Ronald J. Mikulak  
Mr. Keith Parsons  
Mr. John Biagi  
Mr. Edward D. Johnson, Jr.

ENVIRONMENTAL PROTECTION DIVISION  
DEPARTMENT OF NATURAL RESOURCES  
STATE OF GEORGIA  
PERMIT TO WITHDRAW, DIVERT OR IMPOUND SURFACE WATER

PERMITTEE'S NAME City of Jefferson

PERMIT NUMBER 078-0301-06 (New)

PERMITTEE'S ADDRESS 147 Athens Street, Jefferson, Georgia 30549

In accordance with the provisions of the Georgia Water Quality Control Act, (O.C.G.A. § 12-5-20 et seq.) as amended, and the Rules and Regulations for Water Quality Control, Chapter 391-3-6, promulgated pursuant thereto, this permit is issued to withdraw surface water from the (source) North Oconee River for the purpose of filling Parks Creek Reservoir.

The permittee must comply with the following limitations:

- (1) Maximum 24 hour: Withdrawal 4.0 MGD; Impoundment \_\_\_\_ MGD; Diversion \_\_\_\_ MGD
- (2) Not to exceed a monthly average of 4.0 MGD

This permit is conditioned upon the permittee complying with the following:

STANDARD CONDITIONS

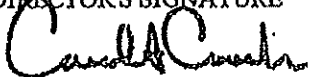
- (1) The provisions of the Water Quality Control Act, as amended, or any of the Rules and Regulations promulgated thereto;
- (2) This permit shall not be transferred except with the approval of the Division;
- (3) The use of surface water is limited to the quantities and purposes as specified herein;
- (4) The permittee shall submit annually to the Division, within 30 days of completion of the calendar year, a report listing for each month of the previous year:
  - a. The gallons per day withdrawn, based on an average of the daily withdrawals for the month;
  - b. The maximum 24 hour withdrawal;
- (5) And the attached special conditions which are hereby made a part of this permit.

In accordance with the application dated 2-28-00 and in conformity with the statements and supporting data entered therein or attached thereto, all of which are filed with the Environmental Protection Division of the Department of Natural Resources and are hereby made part of this Permit.

This Permit is effective from the date written below and is subject to revocation pursuant to the Georgia Water Quality Control Act, as amended, O.C.G.A. § 12-5-31 (k).

Absent prior revocation in accordance with the above language, this Permit shall expire on the 1st day of September 2020.

DIRECTOR'S SIGNATURE



DATE: December 9, 2008

Director  
Environmental Protection Division  
Department of Natural Resources

SPECIAL CONDITIONS

1. The City of Jefferson (City) withdraws from the North Oconee River in Jackson County about six miles northeast of the City. The intake is about 1.0 mile downstream of the confluence of Gravelly Creek and the river and about 2.5 miles upstream of the Ga. Hwy. 15 crossing. All water withdrawn must be metered at or immediately upon leaving the intake structure.
2. The City withdraws water under this permit to maintain water levels in the Parks Creek Reservoir (Permit 078-0301-07), located about 4 miles northeast of the City.
3. The City must pass, immediately below the intake, a non-depletable flow (NDF) of 17.4 mgd (26.9 cfs) or the natural streamflow, whichever is less. (The NDF equals the sum of the annual 7Q10 flow\* of 7.72 mgd (11.9 cfs) and the prorated share of the existing Athens-Clarke County North Oconee monthly average withdrawal of 25.5 mgd).
4. The City, at least two years prior to the North Oconee River withdrawals, must establish the following instream monitoring for the proposed intake:
  - a. A continuous streamflow monitoring gage upstream. Daily streamflow records should be kept on file at the water treatment plant and submitted monthly to the Environmental Protection Division (EPD). These monthly records will be submitted with the monthly Surface Water Withdrawal Report.
  - b. Biological monitoring stations downstream that follow EPA Rapid Bioassessment and the Ga. Wildlife Resources Division protocols to monitor periphyton, macro-invertebrates, fish, and habitat once annually. Records should be kept on file at the water treatment plant and submitted annually to EPD by March 1.
5. The City, when the monitoring is established, must submit details of the gage types and locations to the Environmental Protection Division (EPD).
6. The City must act promptly to address any violations of water quality standards (chemical/biological) indicated by the monitoring results provided in condition 4 above.
7. If the on-going water quality studies or biological monitoring show that different minimum instream flows are necessary to meet the North Oconee River water quality standards and designated uses (GADNR, USEPA, USACE, USFWS concurring), then the City must adjust the minimum instream flows as needed to avoid water quality standards violations.
8. In addition to Standard Condition number (4), the City must submit to EPD, within 15 days of the completion of the calendar month, a monthly Surface Water Withdrawal Report showing daily raw water withdrawals for the previous month associated with this Permit. Also, this monthly Surface Water Withdrawal Report should list separately each of the City's raw water withdrawal intakes daily raw water withdrawals for the previous month.
9. The City must submit to BPD a five-year Water Conservation Progress Report pursuant to the completed Water Conservation Plan no later than September 1, 2015. Future modifications and renewals of this Permit and all other EPD Surface Water Withdrawal Permits issued to the City will be linked to the appropriate implementation of the Water Conservation Plan. This Progress Report should include any actions and/or improvements made to conserve water and reduce water losses (e.g., leak detection and leak repair, meter installation and calibration, meter replacement, summer and peak use surcharges, education efforts, enforcement of ultra-low flow plumbing fixtures, etc.). The Water Conservation Progress Report must also include annual per capita water use trends or per unit use trends, consumptive loss trends, and unaccounted for water trends for each of the previous five years.
10. The City must abide by its Drought Contingency Plan and, in addition, defer to the Georgia Drought Management Plan, and the Outdoor Water Use Restrictions contained therein, when that plan is more stringent.



SPECIAL CONDITIONS

11. The City shall not transfer any water withdrawn via this Permit to any entity operating outside the Oconee River Basin without EPD approval of such a transfer.
12. The Parks Creek Reservoir is designed and approved for a safe dependable yield (annual average yield) of 3.8 mgd based on the May 2003 Reservoir Yield Analysis.
13. The City must coordinate with Jackson County and the Town of Maysville in implementing the Watershed Protection Plan for the North Oconee River intake.
14. The City, before withdrawing from the North Oconee River under this permit, must use its full water supply allocation of 0.3 mgd under the 2000 Intergovernmental Contract between Jefferson, Jackson County, and Jackson County Water & Sewerage Authority. The Upper Oconee Basin Water Authority 1996 Intergovernmental Reservoir and Water Supply Agreement may be an avenue for additional water.

\* The minimum average flow for seven consecutive days with a 10-year recurrence interval (U. S. Geological Survey).

PERMIT MODIFICATION

The permittee may seek modification of any of the terms of an unexpired permit upon written request to the Director.

ENVIRONMENTAL PROTECTION DIVISION  
DEPARTMENT OF NATURAL RESOURCES  
STATE OF GEORGIA  
PERMIT TO WITHDRAW, DIVERT OR IMPOUND SURFACE WATER

PERMITTEE'S NAME City of Jefferson

PERMIT NUMBER 078-0301-07 (New)

PERMITTEE'S ADDRESS 147 Athens Street, Jefferson, Georgia 30549

In accordance with the provisions of the Georgia Water Quality Control Act, (O.C.G.A. § 12-5-20 et seq.) as amended, and the Rules and Regulations for Water Quality Control, Chapter 391-3-6, promulgated pursuant thereto, this permit is issued to withdraw surface water from the (source) Parks Creek Reservoir for the purpose of municipal water supply.

The permittee must comply with the following limitations:

- (1) Maximum 24 hour: Withdrawal MGD; Impoundment 5.3 MGD; Diversion \_\_\_\_\_ MGD
- (2) Not to exceed a monthly average of 4.6 MGD

This permit is conditioned upon the permittee complying with the following:

STANDARD CONDITIONS

- (1) The provisions of the Water Quality Control Act, as amended; or any of the Rules and Regulations promulgated thereto;
- (2) This permit shall not be transferred except with the approval of the Division;
- (3) The use of surface water is limited to the quantities and purposes as specified herein;
- (4) The permittee shall submit annually to the Division, within 30 days of completion of the calendar year, a report listing for each month of the previous year:
  - a. The gallons per day withdrawn, based on an average of the daily withdrawals for the month;
  - b. The maximum 24 hour withdrawal;
- (5) And the attached special conditions which are hereby made a part of this permit.

In accordance with the application dated 9-11-03 and in conformity with the statements and supporting data entered therein or attached thereto, all of which are filed with the Environmental Protection Division of the Department of Natural Resources and are hereby made part of this Permit.

This Permit is effective from the date written below and is subject to revocation pursuant to the Georgia Water Quality Control Act, as amended, O.C.G.A. § 12-5-31 (k).

Absent prior revocation in accordance with the above language, this Permit shall expire on the 1st day of September 2020.

DIRECTOR'S SIGNATURE



DATE: December 9, 2008

Director  
Environmental Protection Division  
Department of Natural Resources

SPECIAL CONDITIONS

1. The City of Jefferson's (City) Parks Creek Reservoir is located in Jackson County approximately four miles upstream of the confluence of Parks Creek and the North Oconee River. The 171-acre pump storage reservoir is filled by withdrawals from the North Oconee River (Permit 078-0301-06). All water withdrawn must be metered at or immediately upon leaving the intake structure.
2. The City must pass, immediately below Parks Creek Reservoir, the annual 7Q10 flow\* of 0.2 mgd (0.29 cfs) or the inflow, whichever is less.
3. The City must establish the following instream / reservoir monitoring:
  - a. A water-level gage in the reservoir to measure reservoir levels, which will determine the level of drought response in the Drought Contingency Plan.
  - b. A reservoir outlet that allows for the release of flows at variable rates and at varying depths to more closely match downstream thermal and chemical characteristics and meet water quality standards.
  - c. Within six months of 404 permit issuance, a continuous streamflow monitoring gage downstream of the site of the proposed dam. Daily streamflow records should be kept on file at the water treatment plant and submitted monthly to the Environmental Protection Division (EPD). These monthly records will be submitted with the monthly Surface Water Withdrawal Report.
  - d. Within six months of 404 permit issuance, a continuous water quality monitoring station downstream of the site of the proposed dam to measure dissolved oxygen, temperature, pH, conductivity, and turbidity. Records of daily averages of all parameters should be kept on file at the water treatment plant and submitted monthly to EPD. These monthly records will be submitted with the monthly Surface Water Withdrawal Report.
  - e. Within six months of 404 permit issuance, biological monitoring stations downstream of the site of the proposed dam that follow EPA Rapid Bioassessment and the Georgia Wildlife Resources Division protocols to monitor periphyton, macro-invertebrates, fish, and habitat once annually. Records should be kept on file at the water treatment plant and submitted annually to EPD by March 1 of each year.
4. The City, after the monitoring is installed, must submit details of the gage types and locations to EPD.
5. The City must act promptly to address any violations of water quality standards (chemical/biological) indicated by the monitoring results provided in condition 3 above.
6. If the on-going water quality studies or biological monitoring show that different minimum instream flows are necessary to meet the Parks Creek water quality standards and designated uses (GADNR, USEPA, USACE, USFWS concurring), then the City must adjust the minimum instream flows so as to avoid water quality standards violations.
7. In addition to Standard Condition number (4), the City must submit to EPD, a monthly Surface Water Withdrawal Report by the 15<sup>th</sup> of every month showing daily raw water withdrawals for the previous month associated with this Permit. Also, this monthly Surface Water Withdrawal Report should list separately each of the City's raw water withdrawal intakes daily raw water withdrawals for the previous month.
8. The City must submit to EPD a five-year Water Conservation Progress Report pursuant to the completed Water Conservation Plan no later than September 1, 2015. Future modifications and renewals of this Permit and all other EPD Surface Water Withdrawal Permits issued to the City will be linked to the appropriate implementation of the Water Conservation Plan. This Progress Report should include any actions and/or improvements made to conserve water and reduce water losses (e.g., leak detection and leak repair, meter installation and calibration, meter replacement, summer and peak use surcharges, education efforts, enforcement of ultra-low flow plumbing fixtures, etc.). The Water Conservation Progress Report must also include annual per capita water use trends or per unit use trends, consumptive loss trends, and unaccounted for water trends for each of the previous five years.

**SPECIAL CONDITIONS**

9. The City must abide by its Drought Contingency Plan and, in addition, defer to the Georgia Drought Management Plan, and the Outdoor Water Use Restrictions contained within, when that plan is more stringent.
10. The City shall not transfer any water withdrawn via this Permit to any entity operating outside the Oconee River Basin without EPD approval of such a transfer.
11. The reservoir is designed and approved for a safe dependable yield (annual average yield) of 3.8 mgd based on the May 2003 Reservoir Yield Analysis.
12. The City must coordinate with Jackson County in implementing of the Reservoir Management Plan for Parks Creek Reservoir and the Watershed Protection Plans for Curry Creek Reservoir and Parks Creek Reservoir.
13. The City, before withdrawing from the North Oconee River under this permit, must use its full water supply allocation of 0.3 mgd under the 2000 Intergovernmental Contract between Jefferson, Jackson County, and Jackson County Water & Sewerage Authority. The Upper Oconee Basin Water Authority 1996 Intergovernmental Reservoir and Water Supply Agreement may be an avenue for additional water.

\* The minimum average flow for seven consecutive days with a 10-year recurrence interval (U.S. Geological Survey).

**PERMIT MODIFICATION**

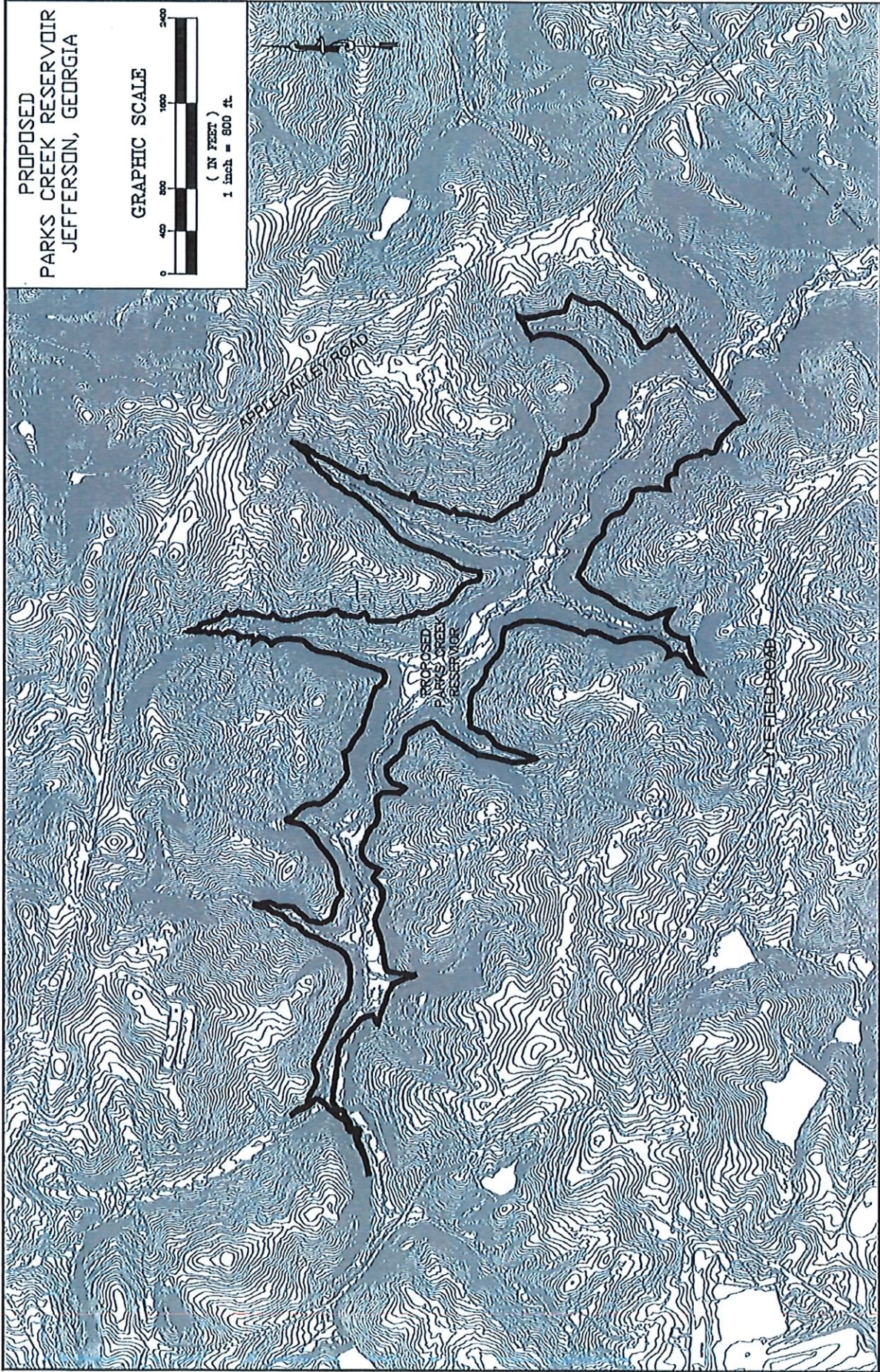
The permittee may seek modification of any of the terms of an unexpired permit upon written request to the Director.

**RFP #2020-10  
REQUEST FOR PROPOSALS  
FOR DESIGN SERVICES OF  
DAM; RESERVOIR AND INTAKE STRUCTURE  
City of Jefferson, Jackson County, Georgia  
Parks Creek Water Supply Program**

**EXHIBIT E**

**General topographic map of site area**

**EXHIBIT E**



**RFP #2020-10  
REQUEST FOR PROPOSALS  
FOR DESIGN SERVICES OF  
DAM; RESERVOIR AND INTAKE STRUCTURE  
City of Jefferson, Jackson County, Georgia  
Parks Creek Water Supply Program**

**EXHIBIT F**

**City's required E-Verify  
And  
SAVE Affidavits for City contracts**

**EXHIBIT "F"**

**E-VERIFY**

**Private Employer Affidavit Pursuant to O.C.G.A. § 36-60-6 (d)**

By executing this affidavit under oath, the undersigned private employer verifies one of the following with respect to its application for a business license, occupational tax certificate, or other document required to operate as referenced in O.C.G.A. § 36-60-6 (d):

**Section 1.**

**Please check only one:**

(A) \_\_\_\_\_ On January 1<sup>st</sup> of the below-signed year, the individual, firm, or corporation employed more than ten (10) employees.

**\*\*\* If you select Section 1 (A), please fill out Section 2, sign and execute below.**

(B) \_\_\_\_\_ On January 1<sup>st</sup> of the below-signed year, the individual, firm, or corporation employed ten (10) or fewer employees.

**\*\*\* If you select Section 1 (B), please skip Section 2, sign and execute below.**

**Section 2.**

The employer has registered with and utilizes the federal work authorization program in accordance with the applicable provisions and deadlines established in O.C.G.A. § 36-60-6. The undersigned private employer also attests that its federal work authorization user identification number and date of authorization are as follows:

\_\_\_\_\_  
Name of Private Employer

\_\_\_\_\_  
Federal Authorization User Identification Number: (*Note: this number has at least 4 and no more than 6 digits.*)

\_\_\_\_\_  
Date of Authorization

*The US Citizenship and Immigration Services website can be accessed at [www.uscis.gov/everify](http://www.uscis.gov/everify)*

**I hereby declare under penalty of perjury that the foregoing is true and correct.**

Executed on \_\_\_\_\_, 20\_\_\_\_ in \_\_\_\_\_ (city), \_\_\_\_\_ (state)

\_\_\_\_\_  
Signature of Authorized Officer or Agent

\_\_\_\_\_  
Printed Name and Title of Authorized Officer or Agent

Subscribed and sworn before me on this \_\_\_\_\_ day of \_\_\_\_\_, \_\_\_\_\_.

My Commission Expires: \_\_\_\_\_

\_\_\_\_\_  
Notary Public

**THIS FORM MUST BE NOTARIZED PRIOR TO RETURN**



**EXHIBIT "F"- Continued**

**Affidavit Verifying Status**

**Affidavit Verifying Status for Public Benefit as Required by Georgia Security and Immigration Compliance Act  
SAVE AFFIDAVIT**

**O.C.G.A – 50-36-1 (e) (2) Affidavit**

By executing this affidavit under oath, as an applicant for a business occupation tax certificate or alcohol license, as referenced in O.C.G.A. § 50-36-1, from City of Jefferson, the undersigned applicant verifies one of the following with respect to my application for a public benefit.

- 1) \_\_\_\_\_ I am a United States Citizen.
- 2) \_\_\_\_\_ I am a legal permanent resident of the United States.
- 3) \_\_\_\_\_ I am a qualified alien or non-immigrant under the Federal Immigration and Nationality Act with an alien number issued by the Department of Homeland Security or other federal immigration agency.

**My alien number issued by the Department of Homeland Security or other federal immigration agency is: \_\_\_\_\_**

The undersigned applicant also hereby verifies that he or she is 18 years of age or older and has provided at least one secure and verifiable document, as required by O.C.G.A. § 50-36-1 (e), with this affidavit.

**Please indicate the document verifying your residency status and attach a copy (front and back).**

- I-327 (Reentry Permit)
- Certificate of Citizenship
- I-688 (Temporary Resident Card)
- I-94 (Arrival/Departure record)
- Temporary I-551 Stamp (on passport or I-94)
- I-20 (Certificate of Eligibility for Nonimmigrant [F-1] Status)
- Other \_\_\_\_\_
- I-551 (Permanent resident Card)
- Naturalization Certificate
- Machine Readable Immigrant Visa
- Unexpired Foreign Passport
- DS2019 (Certificate of Eligibility for Exchange Visitor [J-1] status)
- I-571 (Refugee Travel Document)
- I-688A (Employment Authorization Card)
- I-688B (Employment Authorization Document)
- I-766 (Employment Authorization Card)

In making the above representation under oath, I understand that any person who knowingly and willfully makes a false, fictitious, or fraudulent statement or representation in an affidavit shall be guilty of a violation of O.C.G.A. § 16-10-20, and face criminal penalties as allowed by such criminal statute.

Executed on the \_\_\_\_\_ day of \_\_\_\_\_ in \_\_\_\_\_ (city), \_\_\_\_\_ (state)

\_\_\_\_\_  
Signature of Applicant

\_\_\_\_\_  
Printed Name of Applicant

Subscribed and sworn before me on this \_\_\_\_\_ day of \_\_\_\_\_, \_\_\_\_\_.

\_\_\_\_\_  
My Commission Expires: \_\_\_\_\_

NOTARY PUBLIC